

## STAT5B (Phospho-Ser731) Antibody

Catalog No: #12152



Package Size: #12152-1 50ul #12152-2 100ul

Orders: order@signalwayantibody.com

Support: tech@signalwayantibody.com

## Description

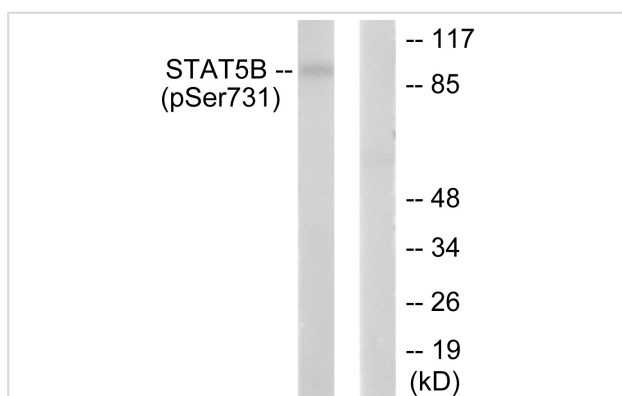
Product Name	STAT5B (Phospho-Ser731) Antibody
Host Species	Rabbit
Clonality	Polyclonal
Purification	Antibodies were produced by immunizing rabbits with synthetic phosphopeptide and KLH conjugates. Antibodies were purified by affinity-chromatography using epitope-specific phosphopeptide. Non-phospho specific antibodies were removed by chromatography using non-phosphopeptide.
Applications	WB IHC
Species Reactivity	Hu Ms Rt
Specificity	The antibody detects endogenous levels of STAT5B only when phosphorylated at serine 731.
Immunogen Type	peptide
Immunogen Description	Peptide sequence around phosphorylation site of serine 731 (A-P-S(p)-P-A) derived from Human STAT5B.
Target Name	STAT5B
Modification	Phospho
Other Names	Signal transducer and activator of transcription 5B
Accession No.	Swiss-Prot#:P51692;NCBI Gene#:6777
SDS-PAGE MW	90kd
Concentration	1.0mg/ml
Formulation	Rabbit IgG in phosphate buffered saline (without Mg <sup>2+</sup> and Ca <sup>2+</sup> ), pH 7.4, 150mM NaCl, 0.02% sodium azide and 50% glycerol.
Storage	Store at -20°C

## Application Details

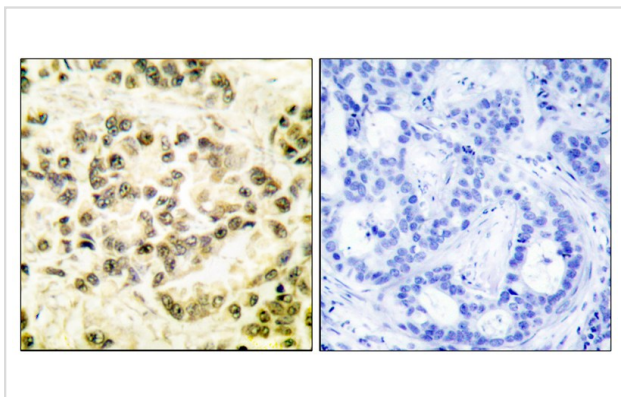
Western blotting: 1:500~1:3000

Immunohistochemistry: 1:50~1:100

## Images



Western blot analysis of extracts from RAW264.7 cells, treated with EGF (200ng/ml, 30mins), using STAT5B (phospho-Ser731) antibody #12152. The lane on the right is treated with the synthesized peptide.



Immunohistochemical analysis of paraffin-embedded human breast carcinoma tissue using STAT5B (phospho-Ser731) antibody #12152. The picture on the right is treated with the synthesized peptide.

## Background

Carries out a dual function: signal transduction and activation of transcription. Mediates cellular responses to the cytokine KITLG/SCF and other growth factors. Binds to the GAS element and activates PRL-induced transcription.

Note: This product is for in vitro research use only and is not intended for use in humans or animals.