

NUDT6 antibody

Catalog No: #38116



Package Size: #38116-1 50ul #38116-2 100ul

Orders: order@signalwayantibody.com

Support: tech@signalwayantibody.com

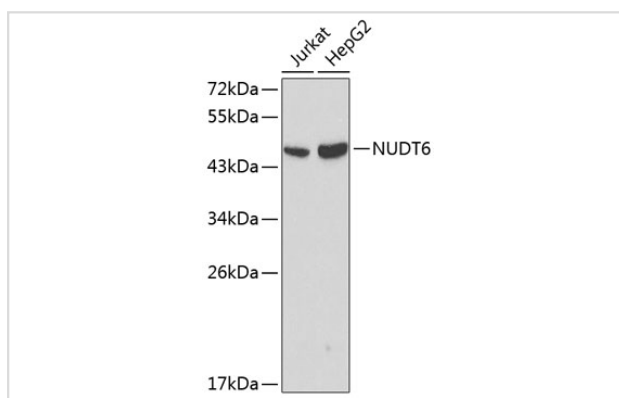
Description

Product Name	NUDT6 antibody
Host Species	Rabbit
Clonality	Polyclonal
Isotype	IgG
Purification	Affinity purification
Applications	WB,IF
Species Reactivity	Human
Specificity	The antibody detects endogenous level of total NUDT6 protein.
Immunogen Type	Recombinant Protein
Immunogen Description	Recombinant fusion protein of human NUDT6 (NP_009014.2).
Target Name	NUDT6
Other Names	NUDT6;ASFGF2;FGF-AS;FGF2AS;GFG-1;GFG1
Accession No.	Uniprot:P53370GeneID:11162
SDS-PAGE MW	47kDa
Concentration	1.0mg/ml
Formulation	PBS with 0.02% sodium azide,50% glycerol,pH7.3.
Storage	Store at -20°C. Avoid freeze / thaw cycles.

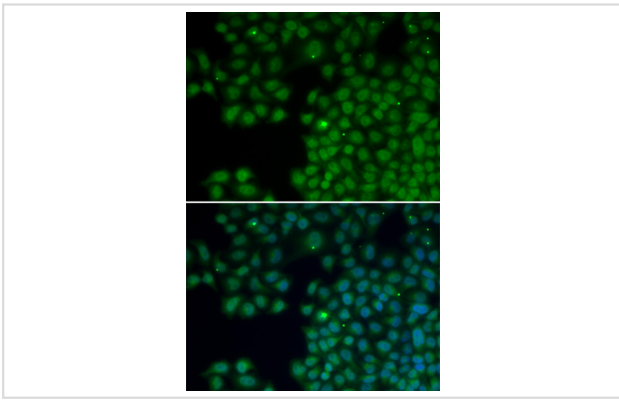
Application Details

WB □ 1:500 - 1:2000 IF □ 1:50 - 1:200

Images



Western blot analysis of extracts of various cell lines, using NUDT6 antibody.



Immunofluorescence analysis of HeLa cells using NUDT6 antibody.

Background

This gene overlaps and lies on the opposite strand from FGF2 gene, and is thought to be the FGF2 antisense gene. The two genes are independently transcribed, and their expression shows an inverse relationship, suggesting that this antisense transcript may regulate FGF2 expression. This gene has also been shown to have hormone-regulatory and antiproliferative actions in the pituitary that are independent of FGF2 expression. Alternatively spliced transcript variants encoding different isoforms have been found for this gene.

Note: This product is for in vitro research use only and is not intended for use in humans or animals.