

ESR1 antibody

Catalog No: #38128

Package Size: #38128-1 50ul #38128-2 100ul

Orders: order@signalwayantibody.com

Support: tech@signalwayantibody.com

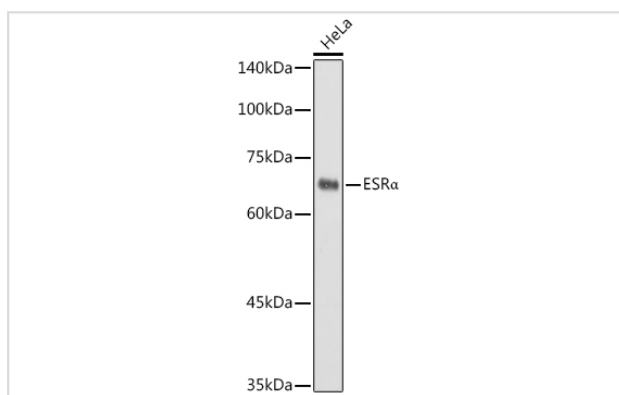
Description

Product Name	ESR1 antibody
Host Species	Rabbit
Clonality	Polyclonal
Isotype	IgG
Purification	Affinity purification
Applications	WB
Species Reactivity	Human,Mouse,Rat
Specificity	The antibody detects endogenous level of total ESR1 protein.
Immunogen Type	Recombinant Protein
Immunogen Description	Recombinant fusion protein of human ESR α (ESR1) (NP_000116.2).
Target Name	ESR1
Other Names	ESR1;ER;ESR;ESRA;ESTRR;Era;NR3A1;ER alpha
Accession No.	Uniprot:P03372GeneID:2099
SDS-PAGE MW	66KDa
Concentration	1.0mg/ml
Formulation	PBS with 0.02% sodium azide,50% glycerol,pH7.3.
Storage	Store at -20°C. Avoid freeze / thaw cycles.

Application Details

WB \square 1:1000 - 1:4000

Images



Western blot analysis of extracts of HeLa cells, using ESR α antibody.

Background

This gene encodes an estrogen receptor, a ligand-activated transcription factor composed of several domains important for hormone binding, DNA binding, and activation of transcription. The protein localizes to the nucleus where it may form a homodimer or a heterodimer with estrogen receptor 2.

Estrogen and its receptors are essential for sexual development and reproductive function, but also play a role in other tissues such as bone. Estrogen receptors are also involved in pathological processes including breast cancer, endometrial cancer, and osteoporosis. Alternative promoter usage and alternative splicing result in dozens of transcript variants, but the full-length nature of many of these variants has not been determined.

Note: This product is for in vitro research use only and is not intended for use in humans or animals.