

EDN1 antibody

Catalog No: #38146



Package Size: #38146-1 50ul #38146-2 100ul

Orders: order@signalwayantibody.comSupport: tech@signalwayantibody.com

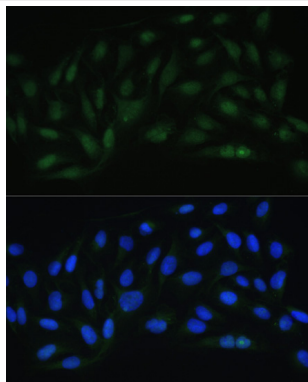
Description

Product Name	EDN1 antibody
Host Species	Rabbit
Clonality	Polyclonal
Purification	Antibodies were purified by affinity purification using immunogen.
Applications	WB,IHC,IF
Species Reactivity	Human,Mouse,Rat
Specificity	The antibody detects endogenous level of total EDN1 protein.
Immunogen Type	Recombinant Protein
Immunogen Description	Recombinant protein of human EDN1.
Target Name	EDN1
Other Names	EDN1;ET1;HDLCQ7;
Accession No.	Swiss-Prot#: P05305NCBI Gene ID: 1906
SDS-PAGE MW	24kd
Concentration	1.0mg/ml
Formulation	Supplied at 1.0mg/mL in phosphate buffered saline (without Mg ²⁺ and Ca ²⁺), pH 7.4, 150mM NaCl, 0.02% sodium azide and 50% glycerol.
Storage	Store at -20°C

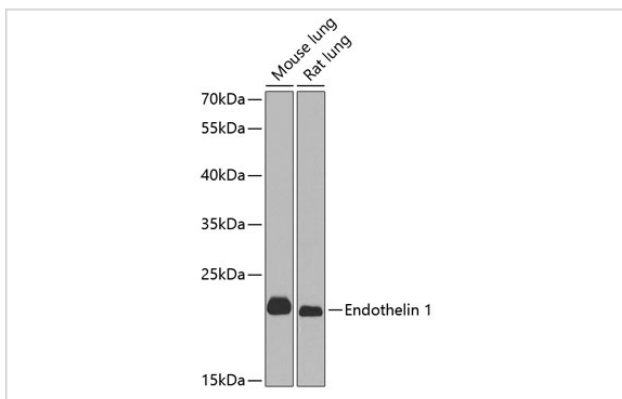
Application Details

WB □ 1:500 - 1:2000 IHC □ 1:50 - 1:100 IF □ 1:50 - 1:100

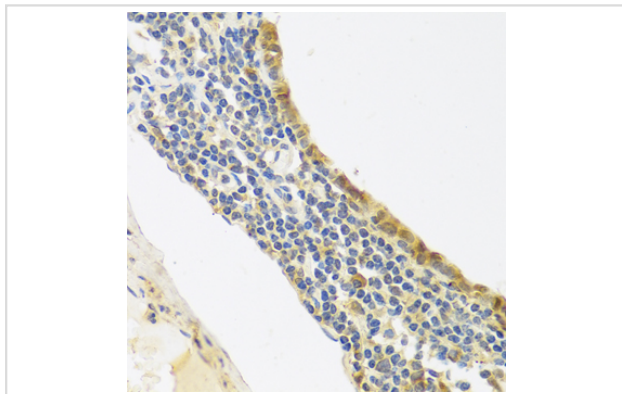
Images



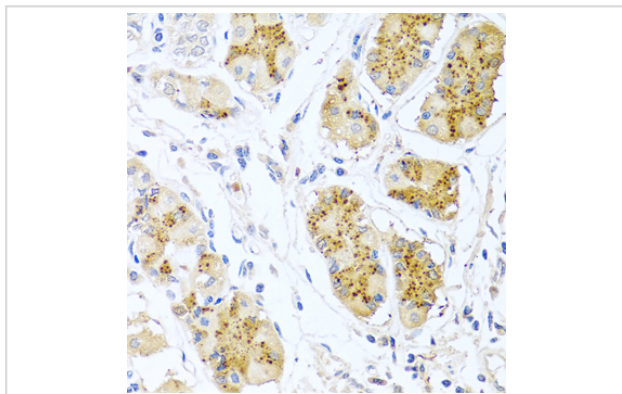
Immunofluorescence analysis of U-2 OS cells using Endothelin 1 antibody at dilution of 1:100. Blue: DAPI for nuclear staining.



Western blot analysis of extracts of various cell lines, using Endothelin 1 antibody at 1:1000 dilution.



Immunohistochemistry of paraffin-embedded human lung cancer using Endothelin 1 antibody at dilution of 1:100 (40x lens).



Immunohistochemistry of paraffin-embedded human stomach using Endothelin 1 antibody at dilution of 1:100 (40x lens).

Background

EDN1, also named as Endothelin-1, PPET1 and ET-1, belongs to the endothelin/sarafotoxin family. Endothelins are endothelium-derived vasoconstrictor peptides. Emerging basic science, and animal and human data all suggest that EDN1 is a potentially important contributor in the pathobiology of fibrosing disorders, including those that affect the lung(PMID:20055532).

Note: This product is for in vitro research use only and is not intended for use in humans or animals.