

LCN6 antibody

Catalog No: #38214

Package Size: #38214-1 50ul #38214-2 100ul

Orders: order@signalwayantibody.comSupport: tech@signalwayantibody.com

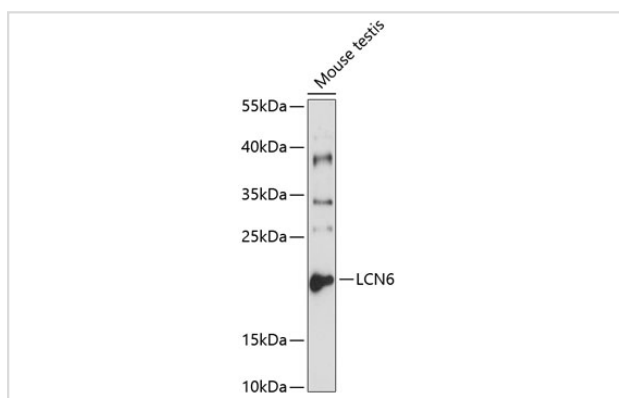
Description

Product Name	LCN6 antibody
Host Species	Rabbit
Clonality	Polyclonal
Purification	Antibodies were purified by affinity purification using immunogen.
Applications	WB
Species Reactivity	Mouse,Rat
Specificity	The antibody detects endogenous level of total LCN6 protein.
Immunogen Type	Recombinant Protein
Immunogen Description	Recombinant protein of human LCN6.
Target Name	LCN6
Other Names	LCN6;LCN5;UNQ643;hLcn5;
Accession No.	Swiss-Prot#: P62502 NCBI Gene ID: 158062
SDS-PAGE MW	18kd
Concentration	1.0mg/ml
Formulation	Supplied at 1.0mg/mL in phosphate buffered saline (without Mg ²⁺ and Ca ²⁺), pH 7.4, 150mM NaCl, 0.02% sodium azide and 50% glycerol.
Storage	Store at -20°C

Application Details

WB □ 1:500 - 1:2000

Images



Western blot analysis of extracts of mouse testis, using LCN6 antibody at 1:1000 dilution.

Background

The Lipocalin family is composed of structurally conserved hydrophobic ligand binding proteins and is represented in all major taxonomic groups from prokaryotes to primates. Members of the lipocalin family are characterized by several common molecular-recognition properties: the ability to bind a

range of small hydrophobic molecules, binding to specific cell-surface receptors and the formation of complexes with soluble macromolecules. Lipocalin-6, also known as LCN5, hLcn5, UNQ643 or LCN6, is a 163 amino acid protein that is predominantly expressed in epididymis. Lipocalin-6 localizes to the head and tail of spermatozoa, with the highest concentration on the post-acrosomal region of the head. Belonging to the calycin superfamily, Lipocalin-6 may play a role in sperm maturation. The gene encoding Lipocalin-6 maps to human chromosome 9, which houses over 900 genes and comprises nearly 4% of the human genome.

Note: This product is for in vitro research use only and is not intended for use in humans or animals.