

VPS37C antibody

Catalog No: #22312

Orders: order@signalwayantibody.com

Support: tech@signalwayantibody.com

Description

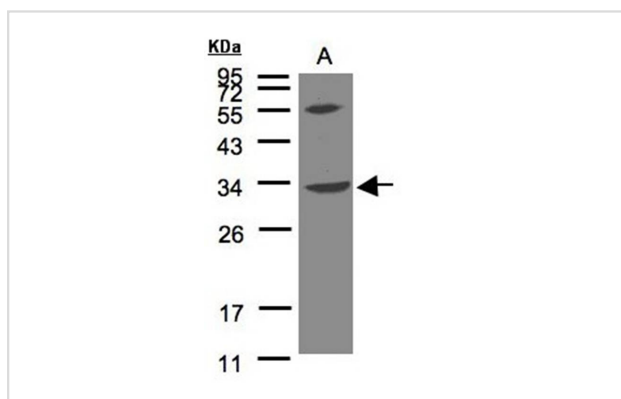
Product Name	VPS37C antibody
Host Species	Rabbit
Clonality	Polyclonal
Purification	Purified by antigen-affinity chromatography.
Applications	WB
Species Reactivity	Hu
Immunogen Type	Peptide
Immunogen Description	Synthetic peptide contain a sequence corresponding to a region within amino acids 1 and 16 of Human VPS37C
Target Name	VPS37C
Accession No.	NCBI Gene ID: 55048NCBI mRNA#: NM_017966NCBI Protein#: NP_060436
Concentration	1mg/ml
Formulation	Supplied in 0.1M Tris-buffered saline with 10% Glycerol (pH7.0). 0.01% Thimerosal was added as a preservative.
Storage	Store at -20°C for long term preservation (recommended). Store at 4°C for short term use.

Application Details

Predicted MW: 39kd

Western blotting: 1:500-1:3000

Images



Sample(30 ug of whole cell lysate)

A: Raji

12% SDS PAGE

Primary antibody diluted at 1: 500

Background

VPS37C is a subunit of ESCRT-I (endosomal sorting complex required for transport I), a complex in the class E vacuolar protein sorting (VPS) pathway required for sorting ubiquitinated transmembrane proteins into internal vesicles of multivesicular bodies (Eastman et al., 2005 [PubMed 15509564]).[supplied by OMIM]

Note: This product is for in vitro research use only and is not intended for use in humans or animals.