

DRD3 antibody

Catalog No: #38253

Package Size: #38253-1 50ul #38253-2 100ul

Orders: order@signalwayantibody.com

Support: tech@signalwayantibody.com

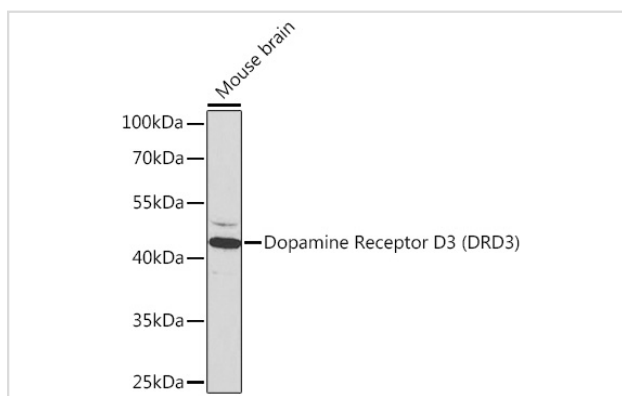
Description

Product Name	DRD3 antibody
Host Species	Rabbit
Clonality	Polyclonal
Isotype	IgG
Purification	Affinity purification
Applications	WB,IF
Species Reactivity	Human,Mouse,Rat
Specificity	The antibody detects endogenous level of total DRD3 protein.
Immunogen Type	Recombinant Protein
Immunogen Description	Recombinant fusion protein of human Dopamine Receptor D3 (Dopamine Receptor D3 (DRD3)) (NP_000787.2).
Target Name	DRD3
Other Names	DRD3;D3DR;ETM1;FET1
Accession No.	Uniprot:P35462GenelD:1814
SDS-PAGE MW	44kDa
Concentration	1.0mg/ml
Formulation	PBS with 0.02% sodium azide,50% glycerol,pH7.3.
Storage	Store at -20°C. Avoid freeze / thaw cycles.

Application Details

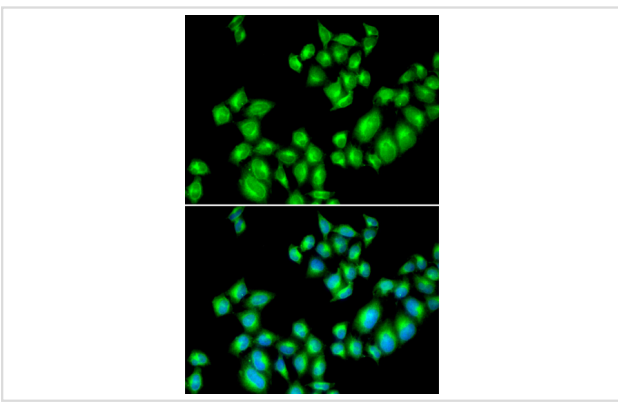
WB □ 1:500 - 1:2000 IF □ 1:50 - 1:200

Images



Western blot analysis of extracts of mouse brain, using Dopamine Receptor D3 (Dopamine Receptor D3 (DRD3)) antibody.

Immunofluorescence analysis of U2OS cells using Dopamine Receptor D3 (Dopamine Receptor D3 (DRD3)) antibody.



Background

This gene encodes the D3 subtype of the five (D1-D5) dopamine receptors. The activity of the D3 subtype receptor is mediated by G proteins which inhibit adenylyl cyclase. This receptor is localized to the limbic areas of the brain, which are associated with cognitive, emotional, and endocrine functions. Genetic variation in this gene may be associated with susceptibility to hereditary essential tremor 1. Alternative splicing of this gene results in transcript variants encoding different isoforms, although some variants may be subject to nonsense-mediated decay (NMD).

Note: This product is for in vitro research use only and is not intended for use in humans or animals.