

EWSR1 antibody

Catalog No: #38281

Package Size: #38281-1 50ul #38281-2 100ul

Orders: order@signalwayantibody.com

Support: tech@signalwayantibody.com

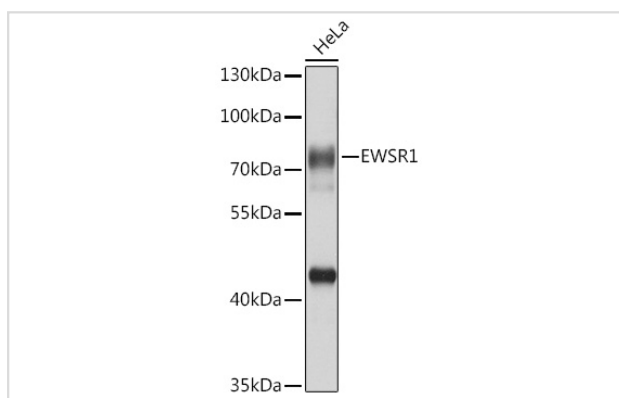
Description

Product Name	EWSR1 antibody
Host Species	Rabbit
Clonality	Polyclonal
Isotype	IgG
Purification	Affinity purification
Applications	WB
Species Reactivity	Human
Specificity	The antibody detects endogenous level of total EWSR1 protein.
Immunogen Type	Recombinant Protein
Immunogen Description	Recombinant fusion protein of human EWSR1 (NP_001156757.1).
Target Name	EWSR1
Other Names	EWSR1;EWS;EWS-FLI1;bK984G1.4
Accession No.	Uniprot:Q01844GeneID:2130
SDS-PAGE MW	75kDa
Concentration	1.0mg/ml
Formulation	PBS with 0.02% sodium azide,50% glycerol,pH7.3.
Storage	Store at -20°C. Avoid freeze / thaw cycles.

Application Details

WB □ 1:500 - 1:2000

Images



Western blot analysis of extracts of HeLa cells, using EWSR1 antibody.

Background

This gene encodes a multifunctional protein that is involved in various cellular processes, including gene expression, cell signaling, and RNA processing and transport. The protein includes an N-terminal transcriptional activation domain and a C-terminal RNA-binding domain. Chromosomal

translocations between this gene and various genes encoding transcription factors result in the production of chimeric proteins that are involved in tumorigenesis. These chimeric proteins usually consist of the N-terminal transcriptional activation domain of this protein fused to the C-terminal DNA-binding domain of the transcription factor protein. Mutations in this gene, specifically a t(11;22)(q24;q12) translocation, are known to cause Ewing sarcoma as well as neuroectodermal and various other tumors. Alternative splicing of this gene results in multiple transcript variants. Related pseudogenes have been identified on chromosomes 1 and 14.

Note: This product is for in vitro research use only and is not intended for use in humans or animals.