

## CD31 antibody

Catalog No: #38365

Package Size: #38365-1 50ul #38365-2 100ul

Orders: order@signalwayantibody.com

Support: tech@signalwayantibody.com

## Description

Product Name	CD31 antibody
Host Species	Rabbit
Clonality	Polyclonal
Isotype	IgG
Purification	Affinity purification
Applications	WB,IHC,IF
Species Reactivity	Human,Mouse
Specificity	The antibody detects endogenous level of total CD31 protein.
Immunogen Type	Peptide
Immunogen Description	A synthetic peptide of human CD31/PECAM1 (NP_000433.4).
Target Name	CD31
Other Names	CD31;CD31/EndoCAM;PECA1;PECAM-1;endoCAM;PECAM1
Accession No.	Uniprot:P16284GeneID:5175
SDS-PAGE MW	130KDa
Concentration	1.0mg/ml
Formulation	PBS with 0.02% sodium azide,50% glycerol,pH7.3.
Storage	Store at -20°C. Avoid freeze / thaw cycles.

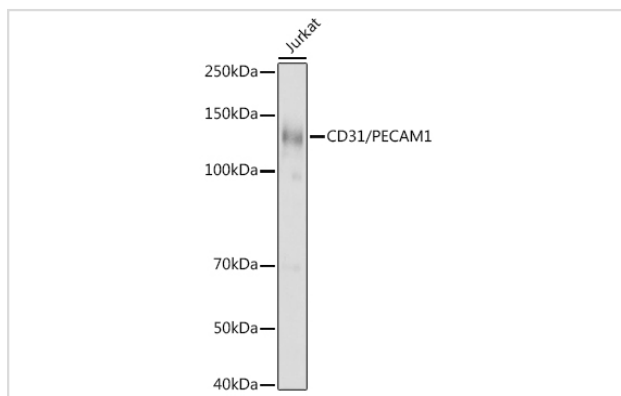
## Application Details

WB □ 1:500 - 1:2000

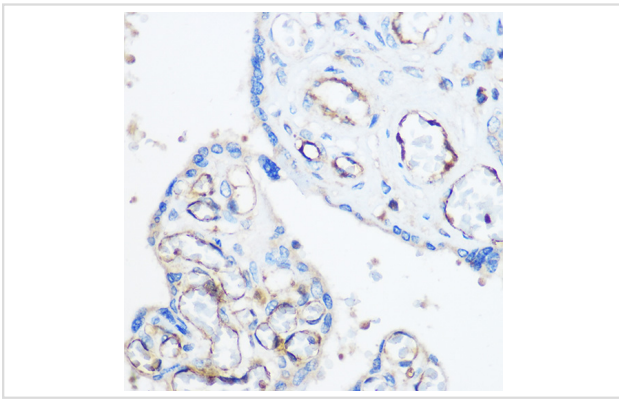
IHC □ 1:100 - 1:200

IF □ 1:50 - 1:200

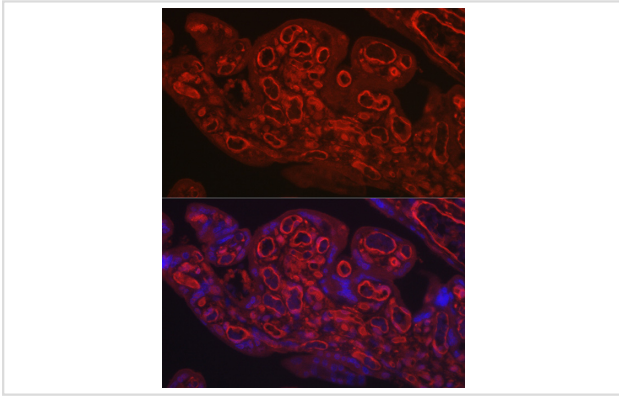
## Images



Western blot analysis of extracts of Jurkat cells, using CD31/PECAM1 antibody.



Immunohistochemistry of paraffin-embedded Human placenta using CD31/PECAM1 Rabbit pAb.



Immunofluorescence analysis of human placenta using CD31/PECAM1 Rabbit pAb.

## Background

The protein encoded by this gene is found on the surface of platelets, monocytes, neutrophils, and some types of T-cells, and makes up a large portion of endothelial cell intercellular junctions. The encoded protein is a member of the immunoglobulin superfamily and is likely involved in leukocyte migration, angiogenesis, and integrin activation.

## Published Papers

el et al., Photoacoustic molecular imaging-escorted adipose photodynamic-browning synergy for fighting obesity with virus-like complexes. In *Nat Nanotechnol* on 2021 Apr by Ronghe Chen, Shanshan Huang, et al.. PMID:33526836, (2021)

[PMID:33526836](https://pubmed.ncbi.nlm.nih.gov/33526836/)

Note: This product is for in vitro research use only and is not intended for use in humans or animals.