

THY1 antibody

Catalog No: #38373



Package Size: #38373-1 50ul #38373-2 100ul

Orders: order@signalwayantibody.com

Support: tech@signalwayantibody.com

Description

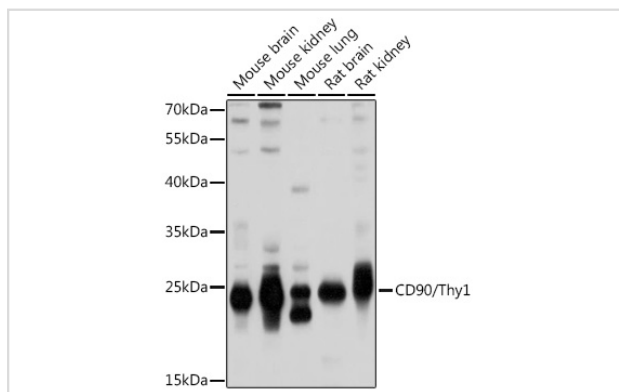
Product Name	THY1 antibody
Host Species	Rabbit
Clonality	Polyclonal
Isotype	IgG
Purification	Affinity purification
Applications	WB IF/ICC
Species Reactivity	Human, Mouse
Specificity	The antibody detects endogenous level of total THY1 protein.
Immunogen Type	Peptide
Immunogen Description	Recombinant fusion protein of human CD90/Thy1 (NP_006279.2).
Target Name	THY1
Other Names	THY1;CD90;CDw90
Accession No.	Uniprot:P04216GenelD:7070
SDS-PAGE MW	25kDa
Concentration	1.0mg/ml
Formulation	PBS with 0.02% sodium azide,50% glycerol,pH7.3.
Storage	Store at -20°C. Avoid freeze / thaw cycles.

Application Details

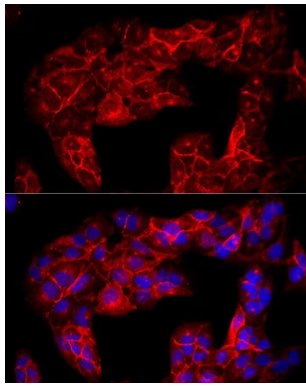
WB 1:1000 - 1:2000

IF/ICC 1:50 - 1:200

Images



Western blot analysis of extracts of various cell lines, using CD90/Thy1 antibody.



Immunofluorescence analysis of U2OS cells using CD90/Thy1 Rabbit pAb at dilution of 1:50 (40x lens). Blue: DAPI for nuclear staining.

Background

This gene encodes a cell surface glycoprotein and member of the immunoglobulin superfamily of proteins. The encoded protein is involved in cell adhesion and cell communication in numerous cell types, but particularly in cells of the immune and nervous systems. The encoded protein is widely used as a marker for hematopoietic stem cells. This gene may function as a tumor suppressor in nasopharyngeal carcinoma. Alternative splicing results in multiple transcript variants.

Note: This product is for in vitro research use only and is not intended for use in humans or animals.