

## EFNB1 antibody

Catalog No: #38414

Package Size: #38414-1 50ul #38414-2 100ul

Orders: [order@signalwayantibody.com](mailto:order@signalwayantibody.com)Support: [tech@signalwayantibody.com](mailto:tech@signalwayantibody.com)

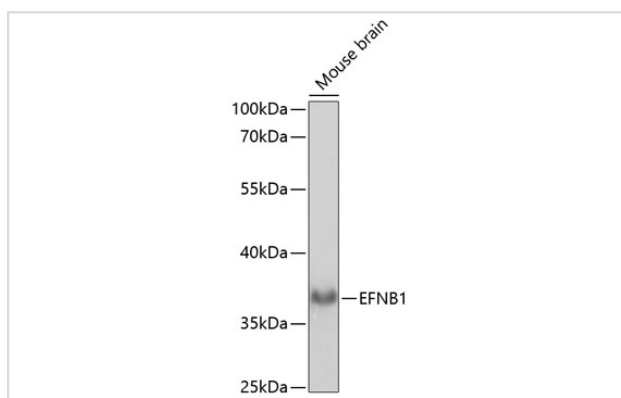
## Description

Product Name	EFNB1 antibody
Host Species	Rabbit
Clonality	Polyclonal
Purification	Antibodies were purified by affinity purification using immunogen.
Applications	WB
Species Reactivity	Mouse
Specificity	The antibody detects endogenous level of total EFNB1 protein.
Immunogen Type	Peptide
Immunogen Description	A synthetic peptide of human EFNB1.
Target Name	EFNB1
Other Names	CFND; CFNS; EFL3; EPLG2; Elk-L; LERK2;
Accession No.	Swiss-Prot#: P98172NCBI Gene ID: 1947
SDS-PAGE MW	38kd
Concentration	1.0mg/ml
Formulation	Supplied at 1.0mg/mL in phosphate buffered saline (without Mg <sup>2+</sup> and Ca <sup>2+</sup> ), pH 7.4, 150mM NaCl, 0.02% sodium azide and 50% glycerol.
Storage	Store at -20°C

## Application Details

Western blotting: □ 1:500 - 1:2000

## Images



Western blot analysis of extracts of mouse brain, using EFNB1 antibody at 1:1000 dilution.

## Background

The protein encoded by this gene is a type I membrane protein and a ligand of Eph-related receptor tyrosine kinases. It may play a role in cell adhesion and function in the development or maintenance of the nervous system.

---

Note: This product is for in vitro research use only and is not intended for use in humans or animals.