

## DNASE1 antibody

Catalog No: #38418

Package Size: #38418-1 50ul #38418-2 100ul

Orders: order@signalwayantibody.com

Support: tech@signalwayantibody.com

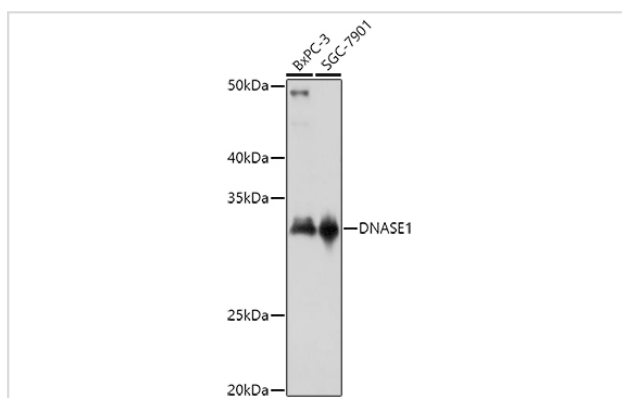
## Description

Product Name	DNASE1 antibody
Host Species	Rabbit
Clonality	Polyclonal
Isotype	IgG
Purification	Affinity purification
Applications	WB
Species Reactivity	Human,Mouse,Rat
Specificity	The antibody detects endogenous level of total DNASE1 protein.
Immunogen Type	Recombinant Protein
Immunogen Description	Recombinant fusion protein of human DNASE1 (NP_005214.2).
Target Name	DNASE1
Other Names	DNASE1;DNL1;DRNI
Accession No.	Uniprot:P24855GenelD:1773
SDS-PAGE MW	32KDa
Concentration	1.0mg/ml
Formulation	PBS with 0.02% sodium azide,50% glycerol,pH7.3.
Storage	Store at -20°C. Avoid freeze / thaw cycles.

## Application Details

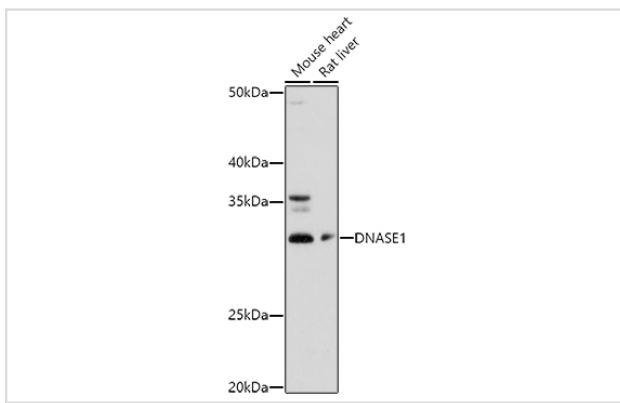
WB □ 1:500 - 1:2000

## Images



Western blot analysis of extracts of various cell lines, using DNASE1 antibody.

Western blot analysis of extracts of various cell lines, using DNASE1 antibody.



## Background

This gene encodes a member of the DNase family. This protein is stored in the zymogen granules of the nuclear envelope and functions by cleaving DNA in an endonucleolytic manner. At least six autosomal codominant alleles have been characterized, DNASE1\*1 through DNASE1\*6, and the sequence of DNASE1\*2 represented in this record. Mutations in this gene have been associated with systemic lupus erythematosus (SLE), an autoimmune disease. A recombinant form of this protein is used to treat the one of the symptoms of cystic fibrosis by hydrolyzing the extracellular DNA in sputum and reducing its viscosity. Alternate transcriptional splice variants of this gene have been observed but have not been thoroughly characterized.

Note: This product is for in vitro research use only and is not intended for use in humans or animals.