

## V-ATPase C2 antibody

Catalog No: #22332

Orders: order@signalwayantibody.com

Support: tech@signalwayantibody.com

## Description

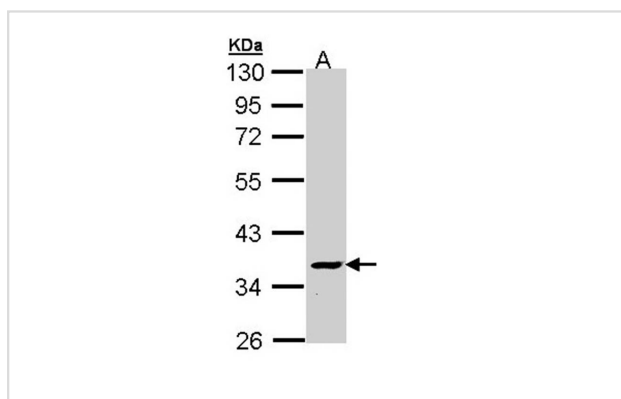
Product Name	V-ATPase C2 antibody
Host Species	Rabbit
Clonality	Polyclonal
Purification	Purified by antigen-affinity chromatography.
Applications	WB
Species Reactivity	Hu
Immunogen Type	Recombinant protein
Immunogen Description	Recombinant protein fragment contain a sequence corresponding to a region within amino acids 3 and 207 of human ATP6V1C2
Target Name	V-ATPase C2
Accession No.	NCBI Gene ID: 245973NCBI mRNA#: NM_144583NCBI Protein#: NP_653184
Concentration	1mg/ml
Formulation	Supplied in 0.1M Tris-buffered saline with 10% Glycerol (pH7.0). 0.01% Thimerosal was added as a preservative.
Storage	Store at -20°C for long term preservation (recommended). Store at 4°C for short term use.

## Application Details

Predicted MW: 44kd

Western blotting: 1:500-1:3000

## Images



Sample (30 ug of whole cell lysate)

A: Molt-4

10% SDS PAGE

Primary antibody diluted at 1: 1000

## Background

This gene encodes a component of vacuolar ATPase (V-ATPase), a multisubunit enzyme that mediates acidification of eukaryotic intracellular organelles. V-ATPase dependent organelle acidification is necessary for such intracellular processes as protein sorting, zymogen activation, receptor-mediated endocytosis, and synaptic vesicle proton gradient generation. V-ATPase is composed of a cytosolic V1 domain and a transmembrane V0 domain. The V1 domain consists of three A, three B, and two G subunits, as well as a C, D, E, F, and H subunit. The V1 domain contains the ATP catalytic site. This gene encodes alternate transcriptional splice variants, encoding different V1 domain C subunit isoforms. [provided

by RefSeq]

---

Note: This product is for in vitro research use only and is not intended for use in humans or animals.