

DBH antibody

Catalog No: #38444

Package Size: #38444-1 50ul #38444-2 100ul

Orders: order@signalwayantibody.com

Support: tech@signalwayantibody.com

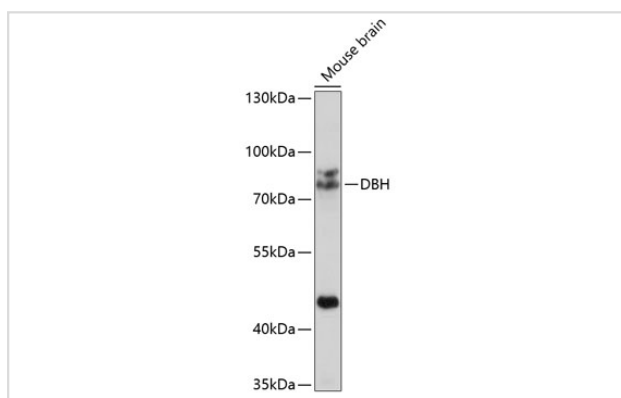
Description

Product Name	DBH antibody
Host Species	Rabbit
Clonality	Polyclonal
Isotype	IgG
Purification	Affinity purification
Applications	WB
Species Reactivity	Human,Mouse,Rat
Specificity	The antibody detects endogenous level of total DBH protein.
Immunogen Type	Recombinant Protein
Immunogen Description	A synthetic peptide of human DBH (NP_000778.3).
Target Name	DBH
Other Names	DBH;DBM
Accession No.	Uniprot:P09172GeneID:1621
SDS-PAGE MW	79kDa
Concentration	1.0mg/ml
Formulation	PBS with 0.02% sodium azide,50% glycerol,pH7.3.
Storage	Store at -20°C. Avoid freeze / thaw cycles.

Application Details

WB □ 1:500 - 1:1000

Images



Western blot analysis of extracts of mouse brain, using DBH antibody.

Background

The protein encoded by this gene is an oxidoreductase belonging to the copper type II, ascorbate-dependent monooxygenase family. It is present in the synaptic vesicles of postganglionic sympathetic neurons and converts dopamine to norepinephrine. It exists in both soluble and membrane-bound

forms, depending on the absence or presence, respectively, of a signal peptide.

Note: This product is for in vitro research use only and is not intended for use in humans or animals.