

ELN antibody

Catalog No: #38448

Package Size: #38448-1 50ul #38448-2 100ul

Orders: order@signalwayantibody.com

Support: tech@signalwayantibody.com

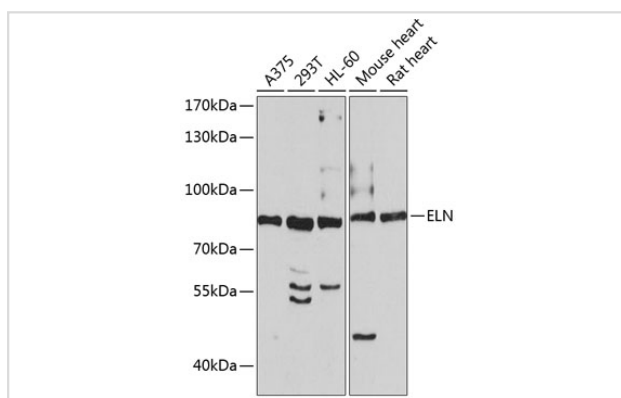
Description

Product Name	ELN antibody
Host Species	Rabbit
Clonality	Polyclonal
Purification	Antibodies were purified by affinity purification using immunogen.
Applications	WB
Species Reactivity	Human,Mouse,Rat
Specificity	The antibody detects endogenous level of total ELN protein.
Immunogen Type	Recombinant Protein
Immunogen Description	Recombinant protein of human ELN.
Target Name	ELN
Other Names	WS; WBS; SVAS;
Accession No.	Swiss-Prot#: P15502NCBI Gene ID: 2006
SDS-PAGE MW	69kd
Concentration	1.0mg/ml
Formulation	Supplied at 1.0mg/mL in phosphate buffered saline (without Mg ²⁺ and Ca ²⁺), pH 7.4, 150mM NaCl, 0.02% sodium azide and 50% glycerol.
Storage	Store at -20°C

Application Details

Western blotting: □ 1:500 - 1:2000

Images



Western blot analysis of extracts of various cell lines, using ELN antibody at 1:1000 dilution.

Background

This gene encodes a protein that is one of the two components of elastic fibers. The encoded protein is rich in hydrophobic amino acids such as glycine and proline, which form mobile hydrophobic regions bounded by crosslinks between lysine residues. Deletions and mutations in this gene are

associated with supralvular aortic stenosis (SVAS) and autosomal dominant cutis laxa. Multiple transcript variants encoding different isoforms have been found for this gene.

Note: This product is for in vitro research use only and is not intended for use in humans or animals.