

DRD1 antibody

Catalog No: #38482

Package Size: #38482-1 50ul #38482-2 100ul

Orders: order@signalwayantibody.com

Support: tech@signalwayantibody.com

Description

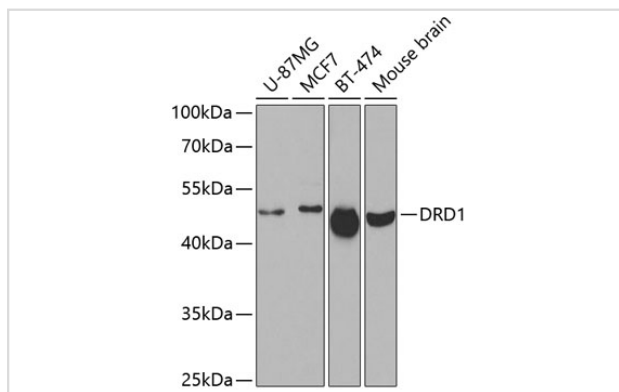
Product Name	DRD1 antibody
Host Species	Rabbit
Clonality	Polyclonal
Purification	Antibodies were purified by affinity purification using immunogen.
Applications	WB
Species Reactivity	Human,Mouse
Specificity	The antibody detects endogenous level of total DRD1 protein.
Immunogen Type	Peptide
Immunogen Description	A synthetic peptide of human DRD1.
Target Name	DRD1
Other Names	DADR;DRD1A;
Accession No.	Swiss-Prot#: P21728NCBI Gene ID: 1812
SDS-PAGE MW	49kd
Concentration	1.0mg/ml
Formulation	Supplied at 1.0mg/mL in phosphate buffered saline (without Mg ²⁺ and Ca ²⁺), pH 7.4, 150mM NaCl, 0.02% sodium azide and 50% glycerol.
Storage	Store at -20°C

Application Details

Western blotting: □1:500 - 1:2000

Immunohistochemistry: □1:50 - 1:100

Images



Western blot analysis of extracts of various cell lines, using DRD1 antibody at 1:500 dilution.

Background

This gene encodes the D1 subtype of the dopamine receptor. The D1 subtype is the most abundant dopamine receptor in the central nervous system.

This G-protein coupled receptor stimulates adenylyl cyclase and activates cyclic AMP-dependent protein kinases. D1 receptors regulate neuronal growth and development, mediate some behavioral responses, and modulate dopamine receptor D2-mediated events. Alternate transcription initiation sites result in two transcript variants of this gene.

Note: This product is for in vitro research use only and is not intended for use in humans or animals.