

EDNRB antibody

Catalog No: #38492

Package Size: #38492-1 50ul #38492-2 100ul

Orders: order@signalwayantibody.comSupport: tech@signalwayantibody.com

Description

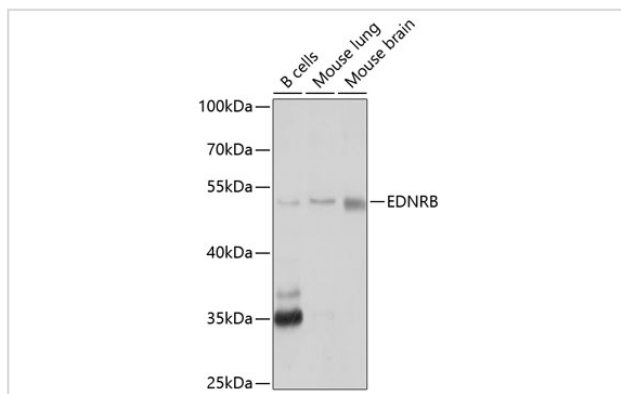
Product Name	EDNRB antibody
Host Species	Rabbit
Clonality	Polyclonal
Purification	Antibodies were purified by affinity purification using immunogen.
Applications	WB
Species Reactivity	Human,Mouse
Specificity	The antibody detects endogenous level of total EDNRB protein.
Immunogen Type	Peptide
Immunogen Description	A synthetic peptide of human EDNRB .
Target Name	EDNRB
Other Names	ETB;ET-B;ETBR;ETRB;HSCR;WS4A;ABCDS;ET-BR;HSCR2;
Accession No.	Swiss-Prot#: P24530NCBI Gene ID: 1910
SDS-PAGE MW	50kd
Concentration	1.0mg/ml
Formulation	Supplied at 1.0mg/mL in phosphate buffered saline (without Mg ²⁺ and Ca ²⁺), pH 7.4, 150mM NaCl, 0.02% sodium azide and 50% glycerol.
Storage	Store at -20°C

Application Details

Western blotting: □1:500 - 1:2000

Immunohistochemistry: □1:50 - 1:100

Images



Western blot analysis of extracts of various cell lines, using EDNRB antibody at 1:1000 dilution.

Background

The protein encoded by this gene is a G protein-coupled receptor which activates a phosphatidylinositol-calcium second messenger system. Its ligand,

endothelin, consists of a family of three potent vasoactive peptides: ET1, ET2, and ET3. Studies suggest that the multigenic disorder, Hirschsprung disease type 2, is due to mutations in the endothelin receptor type B gene. Alternatively spliced transcript variants encoding different isoforms have been found for this gene.

Note: This product is for in vitro research use only and is not intended for use in humans or animals.