

## IGF-1R(Phospho-Tyr1165/Tyr1166) Antibody

Catalog No: #11088



Package Size: #11088-1 50ul #11088-2 100ul

Orders: order@signalwayantibody.com

Support: tech@signalwayantibody.com

## Description

Product Name	IGF-1R(Phospho-Tyr1165/Tyr1166) Antibody
Host Species	Rabbit
Clonality	Polyclonal
Purification	Antibodies were produced by immunizing rabbits with synthetic phosphopeptide and KLH conjugates. Antibodies were purified by affinity-chromatography using epitope-specific phosphopeptide. Non-phospho specific antibodies were removed by chromatography using non-phosphopeptide.
Applications	WB IF
Species Reactivity	Hu Ms Rt
Specificity	The antibody detects endogenous level of IGF-1R only when phosphorylated at tyrosine 1165/tyrosine1166.
Immunogen Type	Peptide-KLH
Immunogen Description	Peptide sequence around phosphorylation site of tyrosine 1165/tyrosine 1166 (T-D-Y(p)-Y(p)-R-K) derived from Human IGF-1R .
Target Name	IGF-1R
Modification	Phospho
Other Names	Insulin-like growth factor I receptor; CD221; IGF1R; kinase IGF1R;
Accession No.	Swiss-Prot: P08069NCBI Protein: NP_000866.1
Concentration	1.0mg/ml
Formulation	Liquid in PBS containing 50% glycerol, 0.5% BSA and 0.02% sodium azide.
Storage	Store at -20°C for long term preservation (recommended). Store at 4°C for short term use.

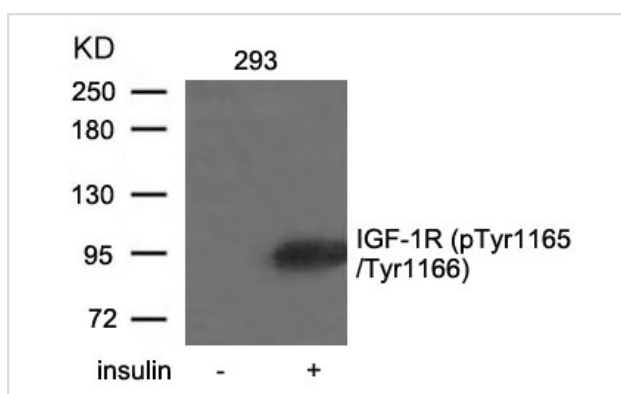
## Application Details

Predicted MW: 200 95 kd

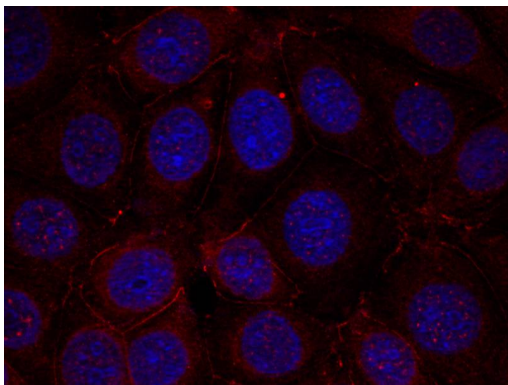
Western blotting: 1:500~1:1000

Immunofluorescence: 1:100~1:200

## Images



Western blot analysis of extracts from 293 cells untreated or treated with insulin using IGF-1R(Phospho-Tyr1165/Tyr1166) Antibody #11088.



Immunofluorescence staining of methanol-fixed MCF cells using IGF-1R(Phospho-Tyr1165/Tyr1166) Antibody #11088.

## Background

This receptor binds insulin-like growth factor 1 (IGF1) with a high affinity and IGF2 with a lower affinity. It has a tyrosine-protein kinase activity, which is necessary for the activation of the IGF1-stimulated downstream signaling cascade. When present in a hybrid receptor with INSR, binds IGF1.

Li S, et al. (1994) J Biol Chem; 269(51): 32558-64.

## Published Papers

el at., Pristimerin attenuates cell proliferation of uveal melanoma cells by Inhibiting Insulin-like growth factor-1 receptor and its downstream pathways. In J Cell Mol Med on 2019 Nov by Xie X, Xie S, et al..PMID:31508890, , (2019)

[PMID:31508890](#)

el at., Tanshinone IIA Attenuates Insulin Like Growth Factor 1 -Induced Cell Proliferation in PC12 Cells through the PI3K/Akt and MEK/ERK Pathways. In Int J Mol Sci. On 2018 Sep 12 by Wang H, Su X et al..PMID: 30213025, , (2018)

[PMID:30213025](#)

el at., H<sub>2</sub>O<sub>2</sub> Attenuates IGF-1R Tyrosine Phosphorylation and Its Survival Signaling Properties in Neuronal Cells via NR2B Containing NMDA Receptor. In Oncotarget on 2017 Jun 27 by Zhiwen Zeng, Dejun Wang, et al..PMID: 29029433, , (2017)

[PMID:29029433](#)

el at., Glutamate Attenuates IGF-1 Receptor Tyrosine Phosphorylation in Mouse Brain: Possible Significance in Ischemic Brain Damage. In Neurosci Res on 2012 Dec by Chengming Sun, Qian Meng, et al..PMID:23085572, , (2012)

[PMID:23085572](#)

Note: This product is for in vitro research use only and is not intended for use in humans or animals.