

## MMP25 antibody

Catalog No: #38544

Package Size: #38544-1 50ul #38544-2 100ul

Orders: [order@signalwayantibody.com](mailto:order@signalwayantibody.com)Support: [tech@signalwayantibody.com](mailto:tech@signalwayantibody.com)

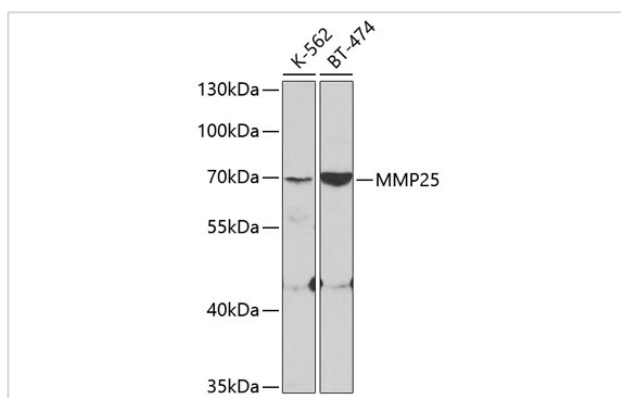
## Description

Product Name	MMP25 antibody
Host Species	Rabbit
Clonality	Polyclonal
Isotype	IgG
Purification	Affinity purification
Applications	WB,IF
Species Reactivity	Human,Mouse,Rat
Specificity	The antibody detects endogenous level of total MMP25 protein.
Immunogen Type	Peptide
Immunogen Description	A synthetic peptide of human MMP25
Target Name	MMP25
Other Names	MMP25;MMP-25;MMP20;MMP20A;MMPL1;MT-MMP 6;MT-MMP6;MT6-MMP;MT6MMP;MTMMP6
Accession No.	Uniprot:Q9NPA2GeneID:64386
SDS-PAGE MW	70kDa
Concentration	1.0mg/ml
Formulation	PBS with 0.02% sodium azide,50% glycerol,pH7.3.
Storage	Store at -20°C. Avoid freeze / thaw cycles.

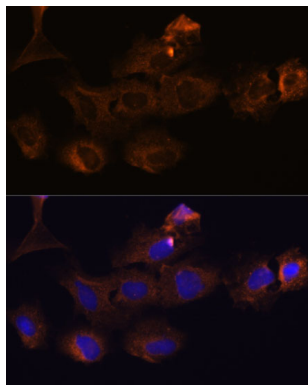
## Application Details

WB □ 1:500 - 1:2000 IF □ 1:50 - 1:200

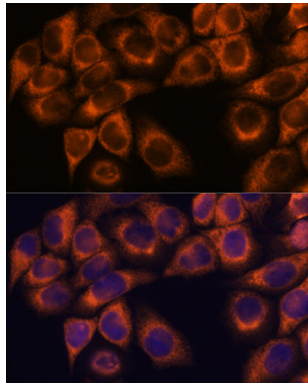
## Images



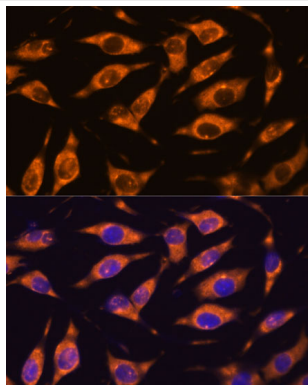
Western blot analysis of extracts of various cell lines, using MMP25 antibody.



Immunofluorescence analysis of C6 cells using MMP25 antibody.



Immunofluorescence analysis of HeLa cells using MMP25 antibody.



Immunofluorescence analysis of L929 cells using MMP25 antibody.

## Background

Proteins of the matrix metalloproteinase (MMP) family are involved in the breakdown of extracellular matrix in normal physiological processes, such as embryonic development, reproduction, and tissue remodeling, as well as in disease processes, such as arthritis and metastasis. Most MMPs are secreted as inactive proproteins which are activated when cleaved by extracellular proteinases. However, the protein encoded by this gene is a member of the membrane-type MMP (MT-MMP) subfamily, attached to the plasma membrane via a glycosylphosphatidylinositol anchor. In response to bacterial infection or inflammation, the encoded protein is thought to inactivate alpha-1 proteinase inhibitor, a major tissue protectant against proteolytic enzymes released by activated neutrophils, facilitating the transendothelial migration of neutrophils to inflammatory sites. The encoded protein may also play a role in tumor invasion and metastasis through activation of MMP2. The gene has previously been referred to as MMP20 but has been renamed MMP25.

Note: This product is for in vitro research use only and is not intended for use in humans or animals.