

MMP11 antibody

Catalog No: #38546

Package Size: #38546-1 50ul #38546-2 100ul

Orders: order@signalwayantibody.com

Support: tech@signalwayantibody.com

Description

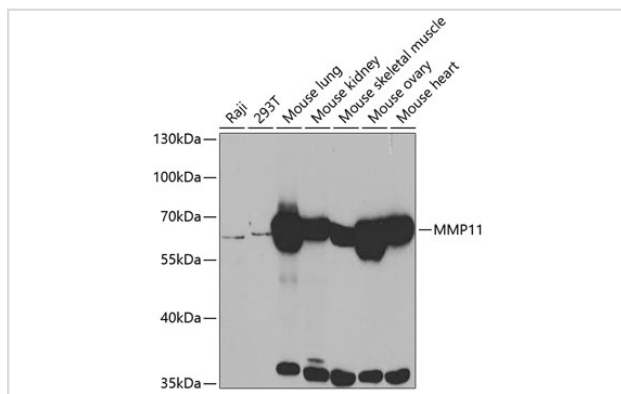
| | |
|-----------------------|--|
| Product Name | MMP11 antibody |
| Host Species | Rabbit |
| Clonality | Polyclonal |
| Purification | Antibodies were purified by affinity purification using immunogen. |
| Applications | WB |
| Species Reactivity | Human,Mouse,Rat |
| Specificity | The antibody detects endogenous level of total MMP11 protein. |
| Immunogen Type | Peptide |
| Immunogen Description | A synthetic peptide of human MMP11. |
| Target Name | MMP11 |
| Other Names | ST3; SL-3; STMY3 |
| Accession No. | Swiss-Prot#: P24347NCBI Gene ID: 4320 |
| SDS-PAGE MW | 55kd |
| Concentration | 1.0mg/ml |
| Formulation | Supplied at 1.0mg/mL in phosphate buffered saline (without Mg ²⁺ and Ca ²⁺), pH 7.4, 150mM NaCl, 0.02% sodium azide and 50% glycerol. |
| Storage | Store at -20°C |

Application Details

Western blotting: □1:500 - 1:2000

Immunohistochemistry: □1:50 - 1:200

Images



Western blot analysis of extracts of various cell lines, using MMP11 antibody at 1:500 dilution.

Background

Proteins of the matrix metalloproteinase (MMP) family are involved in the breakdown of extracellular matrix in normal physiological processes, such as

embryonic development, reproduction, and tissue remodeling, as well as in disease processes, such as arthritis and metastasis. Most MMP's are secreted as inactive proproteins which are activated when cleaved by extracellular proteinases. However, the enzyme encoded by this gene is activated intracellularly by furin within the constitutive secretory pathway. Also in contrast to other MMP's, this enzyme cleaves alpha 1-proteinase inhibitor but weakly degrades structural proteins of the extracellular matrix.

Published Papers

el at., miR-125a-3p suppresses the growth and progression of papillary thyroid carcinoma cell by targeting MMP11. In J Cell Biochem on 2020 Feb; by Song M, Wang N, et al..PMID:31489990, , (2020)

[PMID:31489990](#)

el at., miR-125a-3p suppresses the growth and progression of papillary thyroid carcinoma cell by targeting MMP11. In J Cell Biochem on 2019 Sep 6. by Song M, Wang N, et al..PMID:31489990, , (2019)

[PMID:31489990](#)

Note: This product is for in vitro research use only and is not intended for use in humans or animals.