

NPHS1 antibody

Catalog No: #38552

Package Size: #38552-1 50ul #38552-2 100ul

Orders: order@signalwayantibody.comSupport: tech@signalwayantibody.com

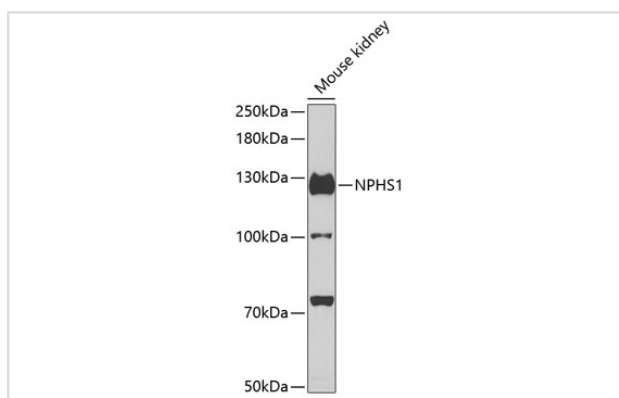
Description

Product Name	NPHS1 antibody
Host Species	Rabbit
Clonality	Polyclonal
Isotype	IgG
Purification	Affinity purification
Applications	WB,IF
Species Reactivity	Mouse,Rat
Specificity	The antibody detects endogenous level of total NPHS1 protein.
Immunogen Type	Peptide
Immunogen Description	A synthetic peptide of human NPHS1
Target Name	NPHS1
Other Names	NPHS1;CNF;NPHN;nephrin
Accession No.	Uniprot:O60500GeneID:4868
SDS-PAGE MW	130kDa
Concentration	1.0mg/ml
Formulation	PBS with 0.02% sodium azide,50% glycerol,pH7.3.
Storage	Store at -20°C. Avoid freeze / thaw cycles.

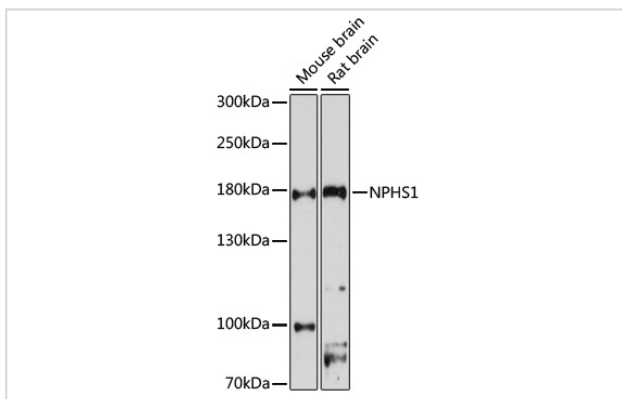
Application Details

WB □ 1:500 - 1:2000 IF □ 1:50 - 1:200

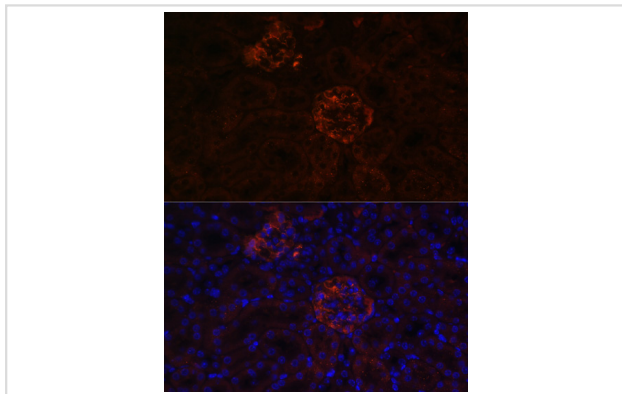
Images



Western blot analysis of extracts of mouse kidney, using NPHS1 antibody.



Western blot analysis of extracts of various cell lines, using NPHS1 antibody.



Immunofluorescence analysis of mouse kidney cells using NPHS1 antibody.

Background

This gene encodes a member of the immunoglobulin family of cell adhesion molecules that functions in the glomerular filtration barrier in the kidney. The gene is primarily expressed in renal tissues, and the protein is a type-1 transmembrane protein found at the slit diaphragm of glomerular podocytes. The slit diaphragm is thought to function as an ultrafilter to exclude albumin and other plasma macromolecules in the formation of urine. Mutations in this gene result in Finnish-type congenital nephrosis 1, characterized by severe proteinuria and loss of the slit diaphragm and foot processes.

Published Papers

el at., Chronic high glucose causes podocyte epithelial-mesenchymal transition through lactate-induced histone lactylation, , (2022)

PMID:

Note: This product is for in vitro research use only and is not intended for use in humans or animals.