

# NFASC antibody

Catalog No: #38553



Package Size: #38553-1 50ul #38553-2 100ul

Orders: [order@signalwayantibody.com](mailto:order@signalwayantibody.com)  
Support: [tech@signalwayantibody.com](mailto:tech@signalwayantibody.com)

## Description

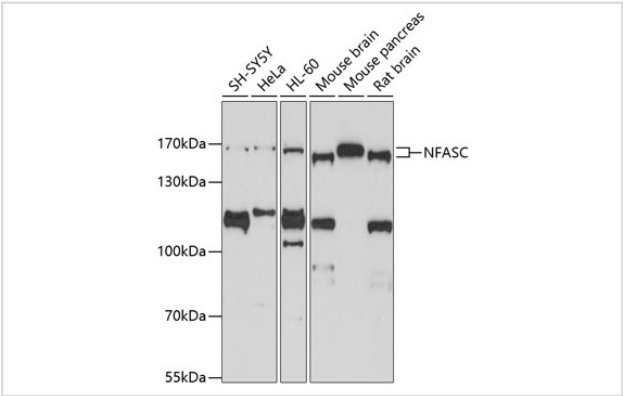
Product Name	NFASC antibody
Host Species	Rabbit
Clonality	Polyclonal
Purification	Antibodies were purified by affinity purification using immunogen.
Applications	WB
Species Reactivity	Human,Mouse,Rat
Specificity	The antibody detects endogenous level of total NFASC protein.
Immunogen Type	Peptide
Immunogen Description	A synthetic peptide of human NFASC.
Target Name	NFASC
Other Names	NF; NRCAML
Accession No.	Swiss-Prot#: O94856NCBI Gene ID: 23114
SDS-PAGE MW	150kd
Concentration	1.0mg/ml
Formulation	Supplied at 1.0mg/mL in phosphate buffered saline (without Mg2+ and Ca2+), pH 7.4, 150mM NaCl, 0.02% sodium azide and 50% glycerol.
Storage	Store at -20°C

## Application Details

Western blotting: □1:500 - 1:2000

Immunohistochemistry: □1:50 - 1:100

## Images



Western blot analysis of extracts of various cell lines, using NFASC antibody at 1:1000 dilution.

## Background

This gene encodes an L1 family immunoglobulin cell adhesion molecule with multiple IGcam and fibronectin domains. The protein functions in neurite

outgrowth, neurite fasciculation, and organization of the axon initial segment (AIS) and nodes of Ranvier on axons during early development. Both the AIS and nodes of Ranvier contain high densities of voltage-gated Na<sup>+</sup> (Nav) channels which are clustered by interactions with cytoskeletal and scaffolding proteins including this protein, gliomedin, ankyrin 3 (ankyrin-G), and betaIV spectrin. This protein links the AIS extracellular matrix to the intracellular cytoskeleton. This gene undergoes extensive alternative splicing, and the full-length nature of some variants has not been determined.

---

Note: This product is for in vitro research use only and is not intended for use in humans or animals.