

## TCF7 antibody

Catalog No: #38572

Package Size: #38572-1 50ul #38572-2 100ul

Orders: order@signalwayantibody.com

Support: tech@signalwayantibody.com

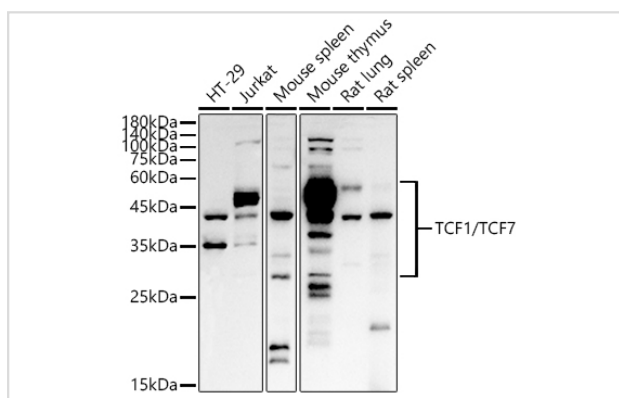
## Description

Product Name	TCF7 antibody
Host Species	Rabbit
Clonality	Polyclonal
Isotype	IgG
Purification	Affinity purification
Applications	WB
Species Reactivity	Human,Mouse,Rat
Specificity	The antibody detects endogenous level of total TCF7 protein.
Immunogen Type	Peptide
Immunogen Description	A synthetic peptide of human TCF1/TCF7
Target Name	TCF7
Other Names	TCF7;TCF-1
Accession No.	Uniprot:P36402GeneID:6932
SDS-PAGE MW	28-50KDa
Concentration	1.0mg/ml
Formulation	PBS with 0.02% sodium azide,50% glycerol,pH7.3.
Storage	Store at -20°C. Avoid freeze / thaw cycles.

## Application Details

WB □ 1:500 - 1:1000

## Images



Western blot analysis of extracts of various cell lines, using TCF1/TCF7 antibody.

## Background

The protein encoded by this gene is a transcriptional activator that plays an important role in lymphocyte differentiation. This gene is expressed predominantly in T-cells. The encoded protein can bind an enhancer element and activate the CD3E gene, and it also may repress the CTNNB1 and

TCF7L2 genes through a feedback mechanism. Several transcript variants encoding different isoforms have been found for this gene.

---

Note: This product is for in vitro research use only and is not intended for use in humans or animals.