

LOXL2 antibody

Catalog No: #22347

Orders: order@signalwayantibody.com

Support: tech@signalwayantibody.com

Description

Product Name	LOXL2 antibody
Host Species	Rabbit
Clonality	Polyclonal
Purification	Purified by antigen-affinity chromatography.
Applications	WB IHC
Species Reactivity	Hu
Immunogen Type	Recombinant protein
Immunogen Description	Recombinant protein fragment contain a sequence corresponding to a region within amino acids 454 and 712 of human LOXL2
Target Name	LOXL2
Accession No.	NCBI Gene ID: 4017NCBI mRNA#: NM_002318NCBI Protein#: NP_002309
Concentration	1.3mg/ml
Formulation	Supplied in 0.1M Tris-buffered saline with 10% Glycerol (pH7.0). 0.01% Thimerosal was added as a preservative.
Storage	Store at -20°C for long term preservation (recommended). Store at 4°C for short term use.

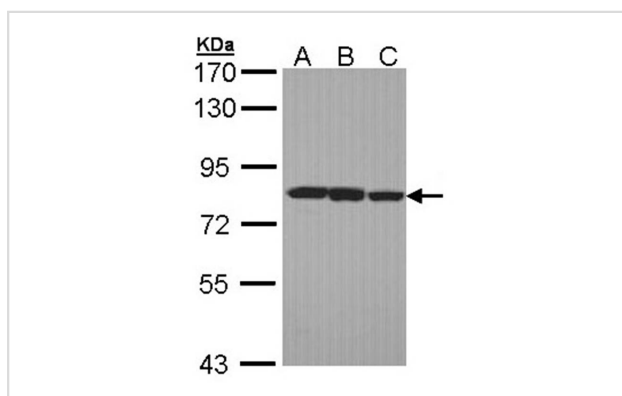
Application Details

Predicted MW: 87kd

Western blotting: 1:500-1:3000

Immunohistochemistry: 1:50-1:500

Images



Sample (30 ug of whole cell lysate)

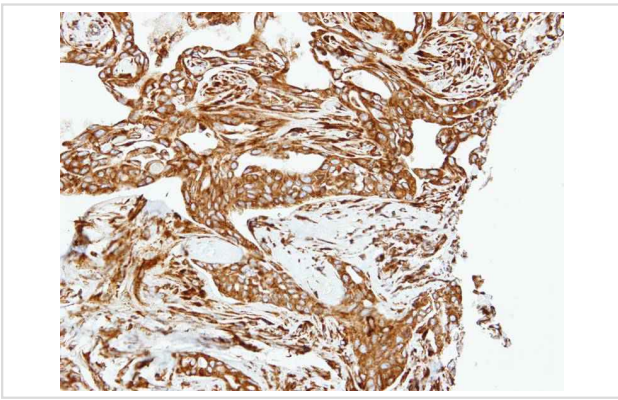
A: 293T

B: A431

C: H1299

7.5% SDS PAGE

Primary antibody diluted at 1: 1000



Immunohistochemical analysis of paraffin-embedded H661 xenograft, using LOXL2 antibody at 1: 500 dilution.

Background

This gene encodes a member of the lysyl oxidase gene family. The prototypic member of the family is essential to the biogenesis of connective tissue, encoding an extracellular copper-dependent amine oxidase that catalyses the first step in the formation of crosslinks in collagens and elastin. A highly conserved amino acid sequence at the C-terminus end appears to be sufficient for amine oxidase activity, suggesting that each family member may retain this function. The N-terminus is poorly conserved and may impart additional roles in developmental regulation, senescence, tumor suppression, cell growth control, and chemotaxis to each member of the family. [provided by RefSeq]

Note: This product is for in vitro research use only and is not intended for use in humans or animals.