

SLC22A8 antibody

Catalog No: #38590

Package Size: #38590-1 50ul #38590-2 100ul

Orders: order@signalwayantibody.comSupport: tech@signalwayantibody.com

Description

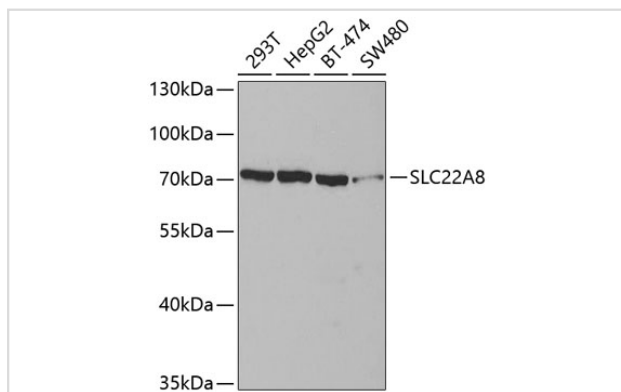
Product Name	SLC22A8 antibody
Host Species	Rabbit
Clonality	Polyclonal
Purification	Antibodies were purified by affinity purification using immunogen.
Applications	WB
Species Reactivity	Human, Mouse, Rat
Specificity	The antibody detects endogenous level of total SLC22A8 protein.
Immunogen Type	Peptide
Immunogen Description	A synthetic peptide of human SLC22A8.
Target Name	SLC22A8
Other Names	OAT3
Accession No.	Swiss-Prot#: Q8TCC7NCBI Gene ID: 9376
SDS-PAGE MW	60kd
Concentration	1.0mg/ml
Formulation	Supplied at 1.0mg/mL in phosphate buffered saline (without Mg ²⁺ and Ca ²⁺), pH 7.4, 150mM NaCl, 0.02% sodium azide and 50% glycerol.
Storage	Store at -20°C

Application Details

Western blotting: □ 1:500 - 1:2000

Immunohistochemistry: □ 1:25- 1:100

Images



Western blot analysis of extracts of various cell lines, using SLC22A8 antibody at 1:400 dilution.

Background

This gene encodes a protein involved in the sodium-independent transport and excretion of organic anions, some of which are potentially toxic. The

encoded protein is an integral membrane protein and appears to be localized to the basolateral membrane of the kidney. Multiple alternatively spliced transcript variants that encode different protein isoforms have been described for this gene.

Note: This product is for in vitro research use only and is not intended for use in humans or animals.