

## CDK6 antibody

Catalog No: #38607

Package Size: #38607-1 50ul #38607-2 100ul

Orders: [order@signalwayantibody.com](mailto:order@signalwayantibody.com)Support: [tech@signalwayantibody.com](mailto:tech@signalwayantibody.com)

## Description

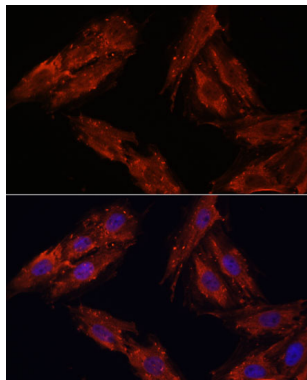
Product Name	CDK6 antibody
Host Species	Rabbit
Clonality	Polyclonal
Purification	Antibodies were purified by affinity purification using immunogen.
Applications	WB,IHC,IF
Species Reactivity	Human,Mouse,Rat
Specificity	The antibody detects endogenous level of total CDK6 protein.
Immunogen Type	Recombinant Protein
Immunogen Description	Recombinant protein of human CDK6.
Target Name	CDK6
Other Names	PLSTIRE;
Accession No.	Swiss-Prot#: Q00534NCBI Gene ID: 1021
SDS-PAGE MW	37kd
Concentration	1.0mg/ml
Formulation	Supplied at 1.0mg/mL in phosphate buffered saline (without Mg <sup>2+</sup> and Ca <sup>2+</sup> ), pH 7.4, 150mM NaCl, 0.02% sodium azide and 50% glycerol.
Storage	Store at -20°C

## Application Details

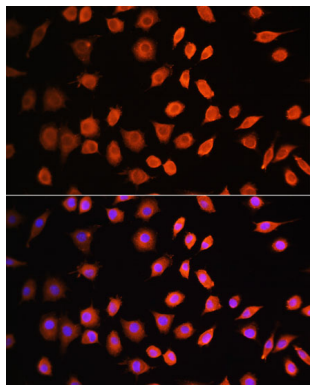
Western blotting: □1:500 - 1:2000

Immunohistochemistry: □1:50 - 1:100

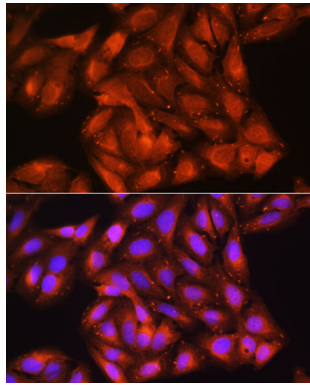
## Images



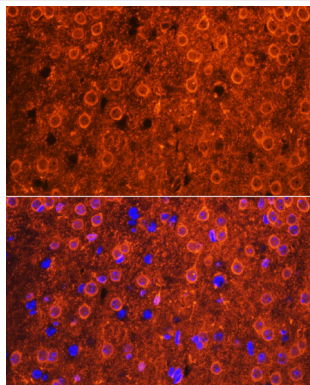
Immunofluorescence analysis of H9C2 cells using CDK6 antibody at dilution of 1:100. Blue: DAPI for nuclear staining.



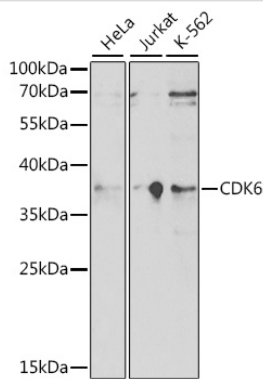
Immunofluorescence analysis of L929 cells using CDK6 antibody at dilution of 1:100. Blue: DAPI for nuclear staining.



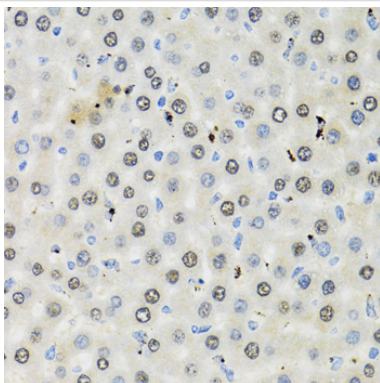
Immunofluorescence analysis of U-2 OS cells using CDK6 antibody at dilution of 1:100. Blue: DAPI for nuclear staining.



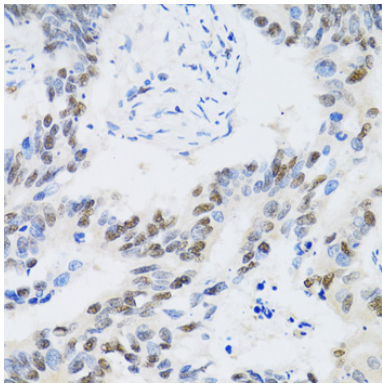
Immunofluorescence analysis of mouse brain using CDK6 antibody at dilution of 1:100. Blue: DAPI for nuclear staining.



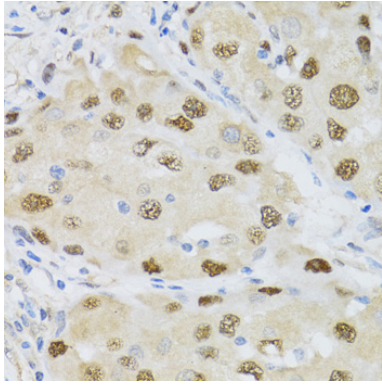
Western blot analysis of extracts of various cell lines, using CDK6 antibody at 1:1000 dilution.



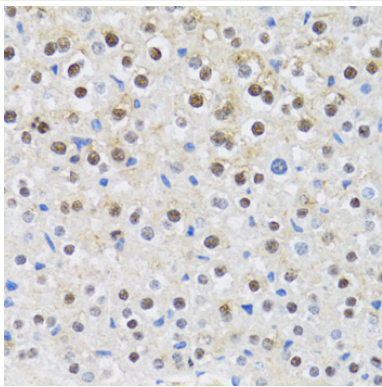
Immunohistochemistry of paraffin-embedded rat liver using CDK6 antibody at dilution of 1:100 (40x lens).



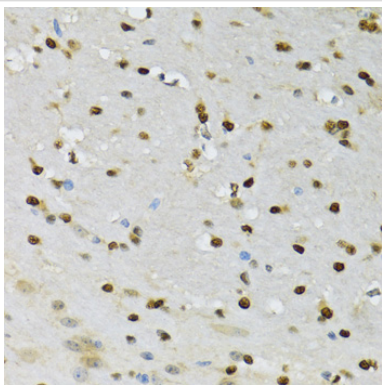
Immunohistochemistry of paraffin-embedded human colon carcinoma using CDK6 antibody at dilution of 1:100 (40x lens).



Immunohistochemistry of paraffin-embedded human breast cancer using CDK6 antibody at dilution of 1:100 (40x lens).



Immunohistochemistry of paraffin-embedded mouse liver using CDK6 antibody at dilution of 1:100 (40x lens).



Immunohistochemistry of paraffin-embedded mouse brain using CDK6 antibody at dilution of 1:100 (40x lens).

## Background

The protein encoded by this gene is a member of the cyclin-dependent protein kinase (CDK) family. CDK family members are highly similar to the gene products of *Saccharomyces cerevisiae* *cdc28*, and *Schizosaccharomyces pombe* *cdc2*, and are known to be important regulators of cell cycle progression. This kinase is a catalytic subunit of the protein kinase complex that is important for cell cycle G1 phase progression and G1/S transition. The activity of this kinase first appears in mid-G1 phase, which is controlled by the regulatory subunits including D-type cyclins and members of INK4 family of CDK inhibitors. This kinase, as well as CDK4, has been shown to phosphorylate, and thus regulate the activity of, tumor suppressor protein Rb. Expression of this gene is up-regulated in some types of cancer. Multiple alternatively spliced variants, encoding the same protein, have been identified.

## Published Papers

---

el et al., CD155 Cooperates with PD-1/PD-L1 to Promote Proliferation of Esophageal Squamous Cancer Cells via PI3K/Akt and MAPK Signaling Pathways. In *Cancers (Basel)* on 2022 Nov 15 by Xiyang Tan, Jie Yang, et al.. PMID:36428703, , (2022)

[PMID:36428703](#)

---

---

Note: This product is for in vitro research use only and is not intended for use in humans or animals.