

DRD5 antibody

Catalog No: #38612

Package Size: #38612-1 50ul #38612-2 100ul

Orders: order@signalwayantibody.comSupport: tech@signalwayantibody.com

Description

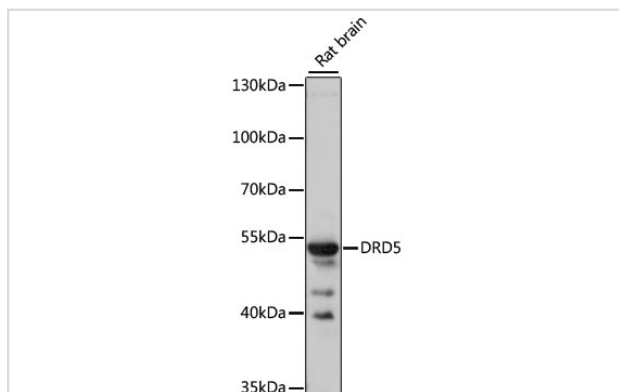
Product Name	DRD5 antibody
Host Species	Rabbit
Clonality	Polyclonal
Purification	Antibodies were purified by affinity purification using immunogen.
Applications	WB
Species Reactivity	Rat
Specificity	The antibody detects endogenous level of total DRD5 protein.
Immunogen Type	Recombinant Protein
Immunogen Description	Recombinant protein of human DRD5.
Target Name	DRD5
Other Names	DBDR; DRD1B; DRD1L2
Accession No.	Swiss-Prot#: P21918NCBI Gene ID: 1816
SDS-PAGE MW	53kd
Concentration	1.0mg/ml
Formulation	Supplied at 1.0mg/mL in phosphate buffered saline (without Mg ²⁺ and Ca ²⁺), pH 7.4, 150mM NaCl, 0.02% sodium azide and 50% glycerol.
Storage	Store at -20°C

Application Details

Western blotting: □ 1:500 - 1:2000

Immunohistochemistry: □ 1:50 - 1:200

Images



Western blot analysis of extracts of rat brain, using DRD5 antibody at 1:1000 dilution.

Background

This gene encodes the D5 subtype of the dopamine receptor. The D5 subtype is a G-protein coupled receptor which stimulates adenylyl cyclase. This

receptor is expressed in neurons in the limbic regions of the brain. It has a 10-fold higher affinity for dopamine than the D1 subtype. Pseudogenes related to this gene reside on chromosomes 1 and 2. [provided by RefSeq, Jul 2008]

Note: This product is for in vitro research use only and is not intended for use in humans or animals.