

ZEB2 antibody

Catalog No: #38682

Package Size: #38682-1 50ul #38682-2 100ul

Orders: order@signalwayantibody.com

Support: tech@signalwayantibody.com

Description

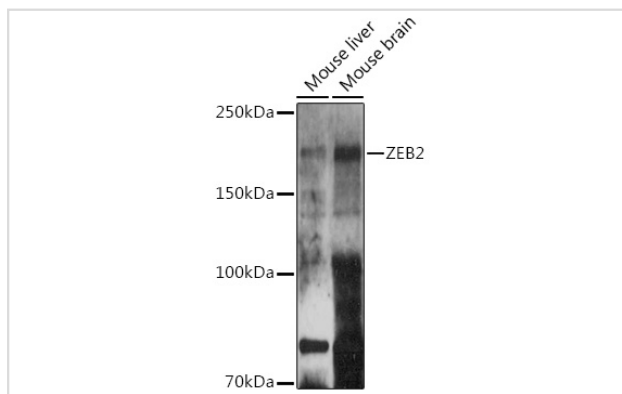
Product Name	ZEB2 antibody
Host Species	Rabbit
Clonality	Polyclonal
Isotype	IgG
Purification	Affinity purification
Applications	WB,IHC
Species Reactivity	Human,Mouse,Rat
Specificity	The antibody detects endogenous level of total ZEB2 protein.
Immunogen Type	Recombinant Protein
Immunogen Description	Recombinant fusion protein of human ZEB2 (NP_055610.1).
Target Name	ZEB2
Other Names	ZEB2;HSPC082;SIP-1;SIP1;SMADIP1;ZFH1B
Accession No.	Uniprot:O60315GeneID:9839
SDS-PAGE MW	210KDa
Concentration	1.0mg/ml
Formulation	PBS with 0.02% sodium azide,50% glycerol,pH7.3.
Storage	Store at -20°C. Avoid freeze / thaw cycles.

Application Details

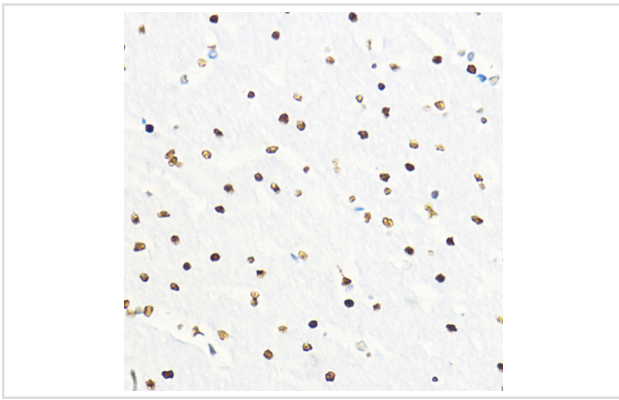
WB □ 1:500 - 1:2000

IHC □ 1:50 - 1:200

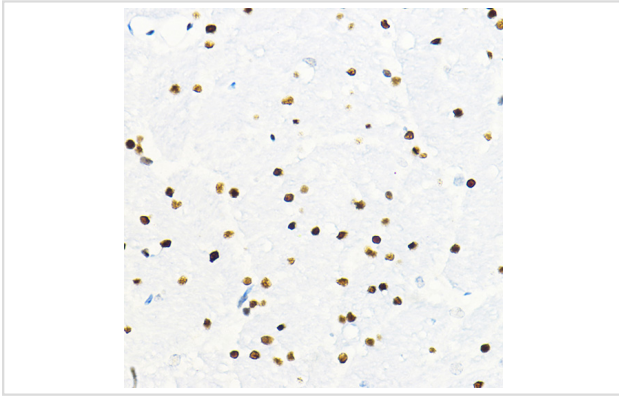
Images



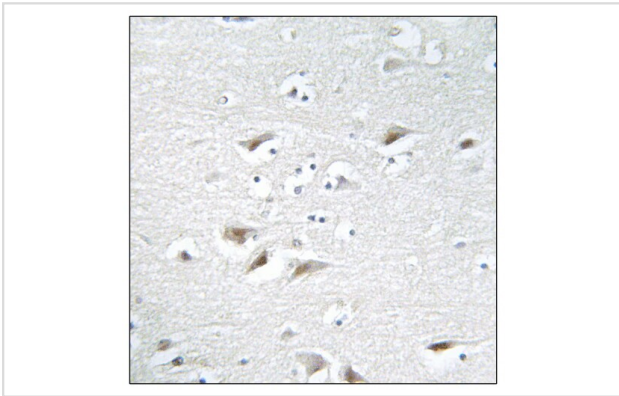
Western blot analysis of extracts of various cell lines, using ZEB2 antibody.



Immunohistochemistry of paraffin-embedded rat brain using ZEB2 Rabbit pAb.



Immunohistochemistry of paraffin-embedded mouse brain using ZEB2 Rabbit pAb.



Immunohistochemistry of paraffin-embedded human brain tissue using ZEB2 Rabbit pAb.

Background

The protein encoded by this gene is a member of the Zfh1 family of 2-handed zinc finger/homeodomain proteins. It is located in the nucleus and functions as a DNA-binding transcriptional repressor that interacts with activated SMADs. Mutations in this gene are associated with Hirschsprung disease/Mowat-Wilson syndrome. Alternatively spliced transcript variants have been found for this gene.

Note: This product is for in vitro research use only and is not intended for use in humans or animals.