

HADHB antibody

Catalog No: #38684

Package Size: #38684-1 50ul #38684-2 100ul

Orders: order@signalwayantibody.com

Support: tech@signalwayantibody.com

Description

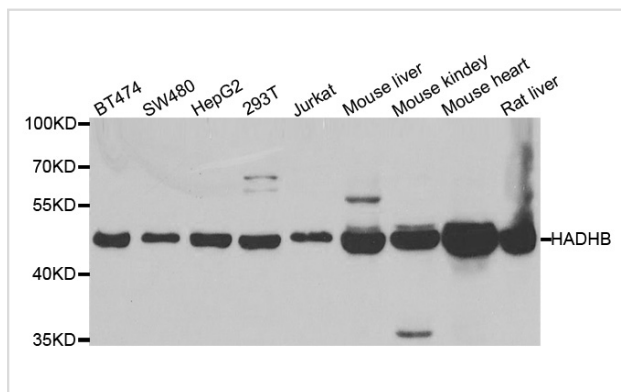
Product Name	HADHB antibody
Host Species	Rabbit
Clonality	Polyclonal
Purification	Antibodies were purified by affinity purification using immunogen.
Applications	WB IF
Species Reactivity	Hu Ms Rt
Specificity	The antibody detects endogenous level of total HADHB protein.
Immunogen Type	Recombinant Protein
Immunogen Description	Recombinant protein of human HADHB.
Target Name	HADHB
Other Names	ECHB; MTPB; MSTP029; TP-BETA;
Accession No.	Swiss-Prot#: P55084NCBI Gene ID: 3032
SDS-PAGE MW	51kd
Concentration	1.0mg/ml
Formulation	Supplied at 1.0mg/mL in phosphate buffered saline (without Mg ²⁺ and Ca ²⁺), pH 7.4, 150mM NaCl, 0.02% sodium azide and 50% glycerol.
Storage	Store at -20°C

Application Details

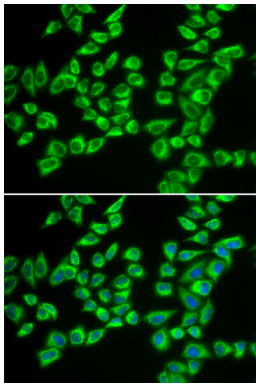
Western blotting: □ 1:500 - 1:2000

Immunofluorescence: 1:50 - 1:200

Images



Western blot analysis of extracts of various cell lines, using HADHB antibody.



Immunofluorescence analysis of A549 cell using HADHB antibody. Blue: DAPI for nuclear staining.

Background

This gene encodes the beta subunit of the mitochondrial trifunctional protein, which catalyzes the last three steps of mitochondrial beta-oxidation of long chain fatty acids. The mitochondrial membrane-bound heterocomplex is composed of four alpha and four beta subunits, with the beta subunit catalyzing the 3-ketoacyl-CoA thiolase activity. The encoded protein can also bind RNA and decreases the stability of some mRNAs. The genes of the alpha and beta subunits of the mitochondrial trifunctional protein are located adjacent to each other in the human genome in a head-to-head orientation. Mutations in this gene result in trifunctional protein deficiency. Alternatively spliced transcript variants encoding different isoforms have been described.

Note: This product is for in vitro research use only and is not intended for use in humans or animals.