

RHOT1 antibody

Catalog No: #38697

Package Size: #38697-1 50ul #38697-2 100ul

Orders: order@signalwayantibody.com

Support: tech@signalwayantibody.com

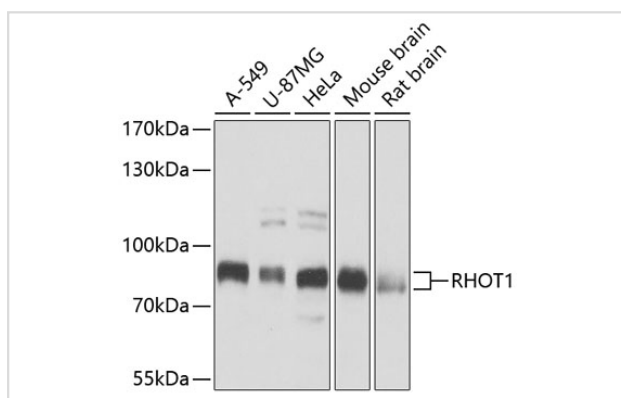
Description

Product Name	RHOT1 antibody
Host Species	Rabbit
Clonality	Polyclonal
Isotype	IgG
Purification	Affinity purification
Applications	WB
Species Reactivity	Human,Mouse,Rat
Specificity	The antibody detects endogenous level of total RHOT1 protein.
Immunogen Type	Recombinant Protein
Immunogen Description	Recombinant fusion protein of human RHOT1 (NP_060777.3).
Target Name	RHOT1
Other Names	RHOT1;ARHT1;MIRO-1;MIRO1
Accession No.	Uniprot:Q8IXI2GeneID:55288
SDS-PAGE MW	80kDa
Concentration	1.0mg/ml
Formulation	PBS with 0.02% sodium azide,50% glycerol,pH7.3.
Storage	Store at -20°C. Avoid freeze / thaw cycles.

Application Details

WB □ 1:500 - 1:2000

Images



Western blot analysis of extracts of various cell lines, using RHOT1 antibody.

Background

Mitochondrial GTPase involved in mitochondrial trafficking. Probably involved in control of anterograde transport of mitochondria and their subcellular distribution.

Published Papers

Li et al., Mitochondrial damage-induced abnormal glucose metabolism with ageing in the hippocampus of APP/PS1 mice. *Metabolomics* 2023 Jun 8;19(6):100000. doi:10.1007/s12010-023-01000-0. PMID:37289288, (2023)

PMID:37289288

Note: This product is for in vitro research use only and is not intended for use in humans or animals.