

## TRPM2 antibody

Catalog No: #38727

Package Size: #38727-1 50ul #38727-2 100ul

Orders: [order@signalwayantibody.com](mailto:order@signalwayantibody.com)Support: [tech@signalwayantibody.com](mailto:tech@signalwayantibody.com)

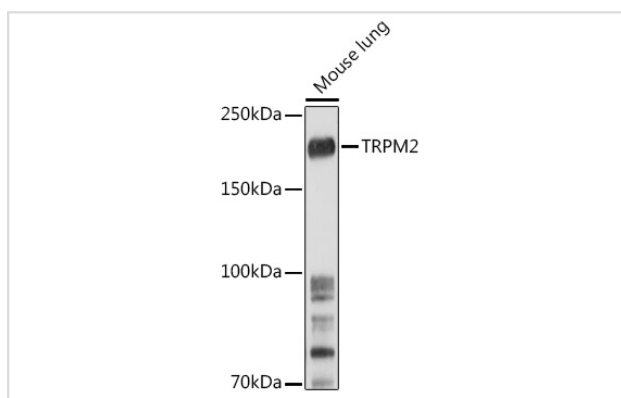
## Description

Product Name	TRPM2 antibody
Host Species	Rabbit
Clonality	Polyclonal
Isotype	IgG
Purification	Affinity purification
Applications	WB,IF
Species Reactivity	Mouse,Rat
Specificity	The antibody detects endogenous level of total TRPM2 protein.
Immunogen Type	Recombinant Protein
Immunogen Description	A synthetic peptide of human TRPM2 (NP_003298.1).
Target Name	TRPM2
Other Names	TRPM2;EREG1;KNP3;LTRPC2;LTpC-2;NUDT9H;NUDT9L1;TRPC7
Accession No.	Uniprot:O94759GeneID:7226
SDS-PAGE MW	171KDa
Concentration	1.0mg/ml
Formulation	PBS with 0.02% sodium azide,50% glycerol,pH7.3.
Storage	Store at -20°C. Avoid freeze / thaw cycles.

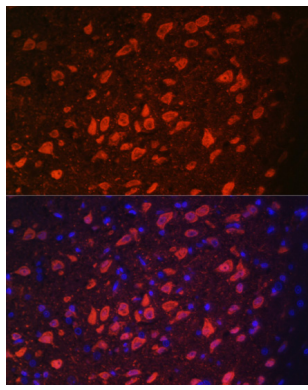
## Application Details

WB □ 1:500 - 1:2000 IF □ 1:50 - 1:100

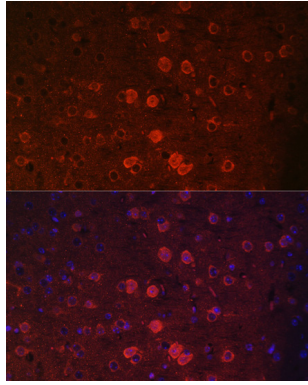
## Images



Western blot analysis of extracts of Mouse lung, using TRPM2 antibody.



Immunofluorescence analysis of rat brain using TRPM2 antibody.



Immunofluorescence analysis of mouse brain using TRPM2 antibody.

## Background

The protein encoded by this gene forms a tetrameric cation channel that is permeable to calcium, sodium, and potassium and is regulated by free intracellular ADP-ribose. The encoded protein is activated by oxidative stress and confers susceptibility to cell death. Alternative splicing results in multiple transcript variants encoding distinct protein isoforms. Additional transcript variants of this gene have been described, but their full-length nature is not known.

Note: This product is for in vitro research use only and is not intended for use in humans or animals.