

ESD antibody

Catalog No: #38761

Package Size: #38761-1 50ul #38761-2 100ul

Orders: order@signalwayantibody.com

Support: tech@signalwayantibody.com

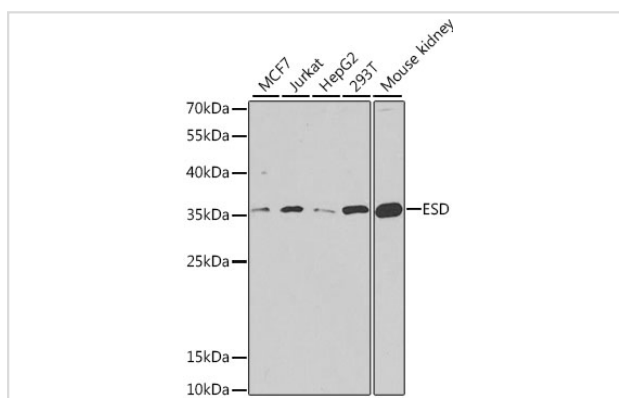
Description

| | |
|-----------------------|--|
| Product Name | ESD antibody |
| Host Species | Rabbit |
| Clonality | Polyclonal |
| Purification | Antibodies were purified by affinity purification using immunogen. |
| Applications | WB,IHC |
| Species Reactivity | Human,Mouse |
| Specificity | The antibody detects endogenous level of total ESD protein. |
| Immunogen Type | Recombinant Protein |
| Immunogen Description | Recombinant protein of human ESD. |
| Target Name | ESD |
| Other Names | FGH; |
| Accession No. | Swiss-Prot#: P10768NCBI Gene ID: 2098 |
| SDS-PAGE MW | 31kd |
| Concentration | 1.0mg/ml |
| Formulation | Supplied at 1.0mg/mL in phosphate buffered saline (without Mg ²⁺ and Ca ²⁺), pH 7.4, 150mM NaCl, 0.02% sodium azide and 50% glycerol. |
| Storage | Store at -20°C |

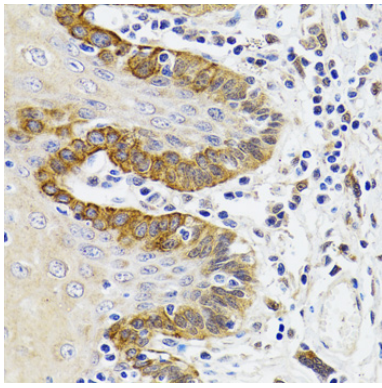
Application Details

Western blotting: □ 1:500 - 1:2000

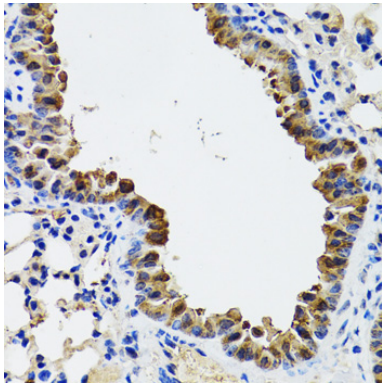
Images



Western blot analysis of extracts of various cell lines, using ESD antibody at 1:1000 dilution.



Immunohistochemistry of paraffin-embedded Human trachea using ESD antibody at dilution of 1:100 (40x lens).



Immunohistochemistry of paraffin-embedded mouse lung using ESD antibody at dilution of 1:100 (40x lens).

Background

This gene encodes a serine hydrolase that belongs to the esterase D family. The encoded enzyme is active toward numerous substrates including O-acetylated sialic acids, and it may be involved in the recycling of sialic acids. This gene is used as a genetic marker for retinoblastoma and Wilson's disease.

Note: This product is for in vitro research use only and is not intended for use in humans or animals.