

## XCL1 antibody

Catalog No: #38887

Package Size: #38887-1 50ul #38887-2 100ul

Orders: [order@signalwayantibody.com](mailto:order@signalwayantibody.com)Support: [tech@signalwayantibody.com](mailto:tech@signalwayantibody.com)

## Description

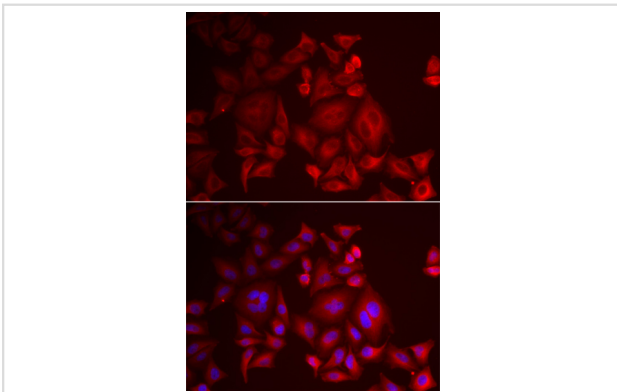
Product Name	XCL1 antibody
Host Species	Rabbit
Clonality	Polyclonal
Purification	Antibodies were purified by affinity purification using immunogen.
Applications	IF
Species Reactivity	Human
Specificity	The antibody detects endogenous level of total XCL1 protein.
Immunogen Type	Recombinant Protein
Immunogen Description	Recombinant protein of human XCL1.
Target Name	XCL1
Other Names	LTN; ATAC; LPTN; SCM1; SCM-1; SCM1A; SCYC1; SCM-1a;
Accession No.	Swiss-Prot#: P47992NCBI Gene ID: 6375
SDS-PAGE MW	12kd
Concentration	1.0mg/ml
Formulation	Supplied at 1.0mg/mL in phosphate buffered saline (without Mg <sup>2+</sup> and Ca <sup>2+</sup> ), pH 7.4, 150mM NaCl, 0.02% sodium azide and 50% glycerol.
Storage	Store at -20°C

## Application Details

Western blotting: □1:500 - 1:2000

Immunofluorescence: □1:50 - 1:100

## Images



Immunofluorescence analysis of U2OS cells using XCL1 antibody. Blue: DAPI for nuclear staining.

## Background

This antimicrobial gene encodes a member of the chemokine superfamily. Chemokines function in inflammatory and immunological responses,

inducing leukocyte migration and activation. The encoded protein is a member of the C-chemokine subfamily, retaining only two of four cysteines conserved in other chemokines, and is thought to be specifically chemotactic for T cells. This gene and a closely related family member are located on the long arm of chromosome 1.

---

Note: This product is for in vitro research use only and is not intended for use in humans or animals.