

## NFS1 antibody

Catalog No: #39088

Package Size: #39088-1 50ul #39088-2 100ul

Orders: [order@signalwayantibody.com](mailto:order@signalwayantibody.com)Support: [tech@signalwayantibody.com](mailto:tech@signalwayantibody.com)

## Description

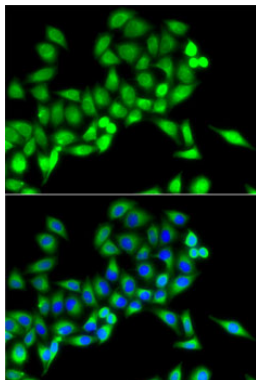
Product Name	NFS1 antibody
Host Species	Rabbit
Clonality	Polyclonal
Purification	Antibodies were purified by affinity purification using immunogen.
Applications	WB,IHC,IF
Species Reactivity	Human,Mouse,Rat
Specificity	The antibody detects endogenous level of total NFS1 protein.
Immunogen Type	Recombinant Protein
Immunogen Description	Recombinant protein of human NFS1.
Target Name	NFS1
Other Names	IscS; NIFS; HUSSY-08;
Accession No.	Swiss-Prot#: Q9Y697NCBI Gene ID: 9054
SDS-PAGE MW	50kd
Concentration	1.0mg/ml
Formulation	Supplied at 1.0mg/mL in phosphate buffered saline (without Mg <sup>2+</sup> and Ca <sup>2+</sup> ), pH 7.4, 150mM NaCl, 0.02% sodium azide and 50% glycerol.
Storage	Store at -20°C

## Application Details

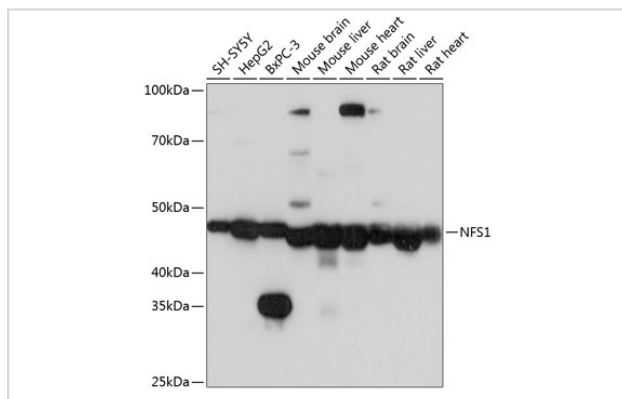
Western blotting: □1:500 - 1:2000

Immunofluorescence: □1:50 - 1:200

## Images



Immunofluorescence analysis of MCF7 cells using NFS1 antibody. Blue: DAPI for nuclear staining.



Western blot analysis of extracts of various cell lines, using NFS1 Polyclonal antibody at 1:1000 dilution.

## Background

Iron-sulfur clusters are required for the function of many cellular enzymes. The proteins encoded by this gene supply inorganic sulfur to these clusters by removing the sulfur from cysteine, creating alanine in the process. This gene uses alternate in-frame translation initiation sites to generate mitochondrial forms and cytoplasmic/nuclear forms. Selection of the alternative initiation sites is determined by the cytosolic pH. The encoded proteins belong to the class-V family of pyridoxal phosphate-dependent aminotransferases. Alternatively spliced transcript variants have been described.

**Note:** This product is for in vitro research use only and is not intended for use in humans or animals.