

# NHLRC1 antibody

Catalog No: #39089



Package Size: #39089-1 50ul #39089-2 100ul

Orders: [order@signalwayantibody.com](mailto:order@signalwayantibody.com)

Support: [tech@signalwayantibody.com](mailto:tech@signalwayantibody.com)

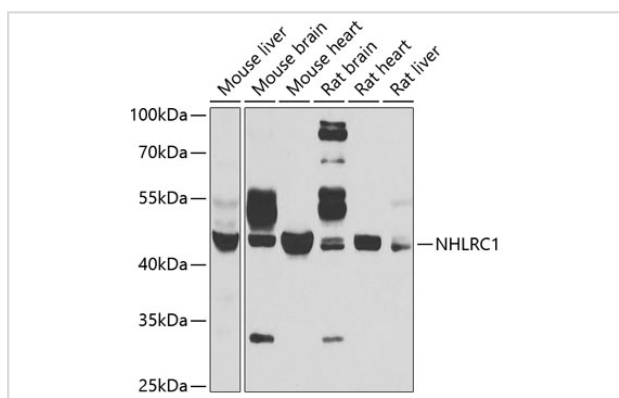
## Description

Product Name	NHLRC1 antibody
Host Species	Rabbit
Clonality	Polyclonal
Isotype	IgG
Purification	Affinity purification
Applications	WB,IHC
Species Reactivity	Human,Mouse,Rat
Specificity	The antibody detects endogenous level of total NHLRC1 protein.
Immunogen Type	Recombinant Protein
Immunogen Description	Recombinant fusion protein of human NHLRC1 (NP_940988.2).
Target Name	NHLRC1
Other Names	NHLRC1;EPM2A;EPM2B;MALIN;bA204B7.2
Accession No.	Uniprot:Q6VVB1GeneID:378884
SDS-PAGE MW	42kDa
Concentration	1.0mg/ml
Formulation	PBS with 0.02% sodium azide,50% glycerol,pH7.3.
Storage	Store at -20°C. Avoid freeze / thaw cycles.

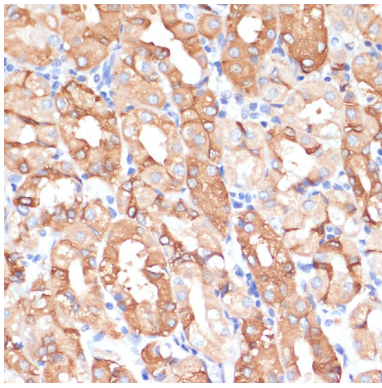
## Application Details

WB □ 1:500 - 1:2000 IHC □ 1:50 - 1:200

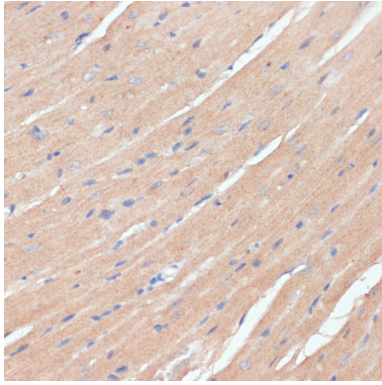
## Images



Western blot analysis of extracts of various cell lines, using NHLRC1 antibody.



Immunohistochemistry of paraffin-embedded human stomach using NHLRC1 antibody.



Immunohistochemistry of paraffin-embedded mouse heart using NHLRC1 antibody.

## Background

The protein encoded by this gene is a single subunit E3 ubiquitin ligase. Laforin is polyubiquitinated by the encoded protein. Defects in this intronless gene lead to an accumulation of laforin and onset of Lafora disease, also known as progressive myoclonic epilepsy type 2 (EPM2).

Note: This product is for in vitro research use only and is not intended for use in humans or animals.