

## TAT antibody

Catalog No: #39162

Package Size: #39162-1 50ul #39162-2 100ul

Orders: order@signalwayantibody.com

Support: tech@signalwayantibody.com

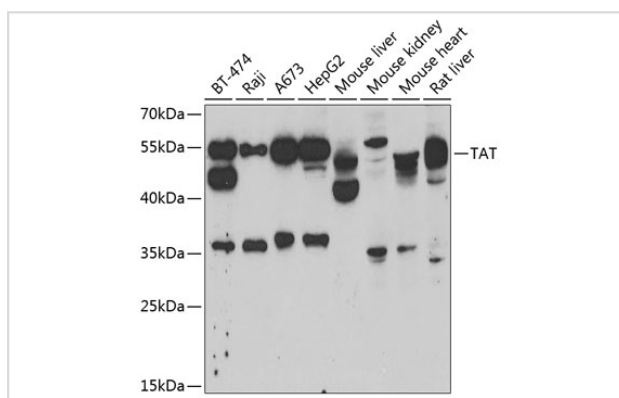
## Description

Product Name	TAT antibody
Host Species	Rabbit
Clonality	Polyclonal
Isotype	IgG
Purification	Affinity purification
Applications	WB
Species Reactivity	Human,Mouse,Rat
Specificity	The antibody detects endogenous level of total TAT protein.
Immunogen Type	Recombinant Protein
Immunogen Description	Recombinant fusion protein of human TAT (NP_000344.1).
Target Name	TAT
Other Names	TAT
Accession No.	Uniprot:P17735GeneID:6898
SDS-PAGE MW	55kDa
Concentration	1.0mg/ml
Formulation	PBS with 0.02% sodium azide,50% glycerol,pH7.3.
Storage	Store at -20°C. Avoid freeze / thaw cycles.

## Application Details

WB □ 1:500 - 1:2000

## Images



Western blot analysis of extracts of various cell lines, using TAT antibody.

## Background

This nuclear gene encodes a mitochondrial protein tyrosine aminotransferase which is present in the liver and catalyzes the conversion of L-tyrosine into p-hydroxyphenylpyruvate. Mutations in this gene cause tyrosinemia (type II, Richner-Hanhart syndrome), a disorder accompanied by major skin

and corneal lesions, with possible mental retardation. A regulator gene for tyrosine aminotransferase is X-linked.

---

Note: This product is for in vitro research use only and is not intended for use in humans or animals.