

TRAPPC10 antibody

Catalog No: #39173

Package Size: #39173-1 50ul #39173-2 100ul

Orders: order@signalwayantibody.com

Support: tech@signalwayantibody.com

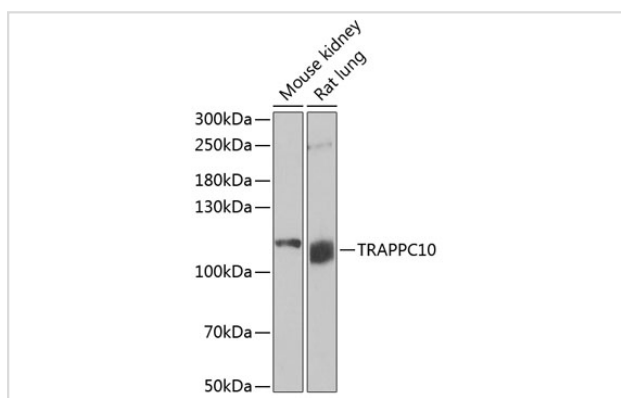
Description

Product Name	TRAPPC10 antibody
Host Species	Rabbit
Clonality	Polyclonal
Isotype	IgG
Purification	Affinity purification
Applications	WB
Species Reactivity	Human,Mouse,Rat
Specificity	The antibody detects endogenous level of total TRAPPC10 protein.
Immunogen Type	Recombinant Protein
Immunogen Description	Recombinant fusion protein of human TRAPPC10 (NP_003265.3).
Target Name	TRAPPC10
Other Names	TRAPPC10;EHOC-1;EHOC1;GT334;TMEM1;TRS130;TRS30
Accession No.	Uniprot:P48553GeneID:7109
SDS-PAGE MW	112kDa
Concentration	1.0mg/ml
Formulation	PBS with 0.02% sodium azide,50% glycerol,pH7.3.
Storage	Store at -20°C. Avoid freeze / thaw cycles.

Application Details

WB □ 1:500 - 1:2000

Images



Western blot analysis of extracts of various cell lines, using TRAPPC10 antibody.

Background

The protein encoded by this gene is a transmembrane protein found in the cis-Golgi complex. The encoded protein is part of the multisubunit transport protein particle (TRAPP) complex and may be involved in vesicular transport from the endoplasmic reticulum to the Golgi. Mutations in this gene could

be responsible for the Unverricht-Lundborg type of progressive myoclonus epilepsy, or for autoimmune polyglandular disease type 1.

Note: This product is for in vitro research use only and is not intended for use in humans or animals.