

Zyxin Antibody

Catalog No: #39205

Orders: order@signalwayantibody.comSupport: tech@signalwayantibody.com

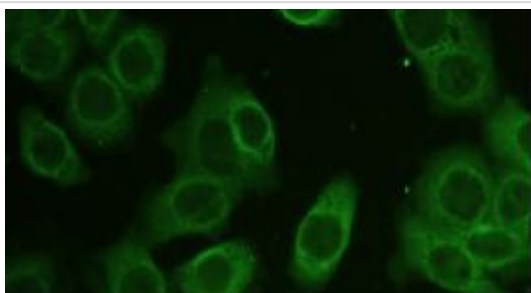
Description

Product Name	Zyxin Antibody
Host Species	Rabbit
Clonality	Polyclonal
Purification	Protein A purified
Applications	ELISA WB IF
Species Reactivity	Hu
Specificity	Not tested with other proteins
Immunogen Type	Peptide-KLH
Immunogen Description	Synthetic peptide conjugated to KLH
Target Name	Zyxin
Concentration	1.0mg/ml
Formulation	PBS, pH 7.4 with 0.02% Sodium Azide
Storage	This product is stable for several weeks at 4°C as an undiluted liquid. Dilute only prior to immediate use. For extended storage, aliquot contents and freeze at -20°C or below. Avoid cycles of freezing and thawing. Expiration date is one (1) year from date of receipt.

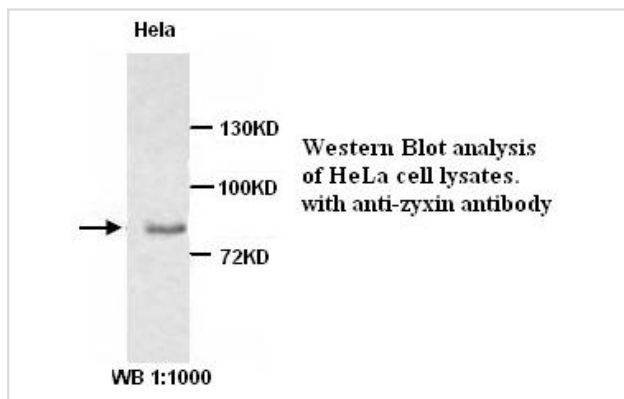
Application Details

ELISA WB IF

Images



Immunofluorescence:
HeLa cells 1: 50



Note: This product is for in vitro research use only and is not intended for use in humans or animals.