

β -Tubulin Antibody

Catalog No: #39299

Orders: order@signalwayantibody.comSupport: tech@signalwayantibody.com

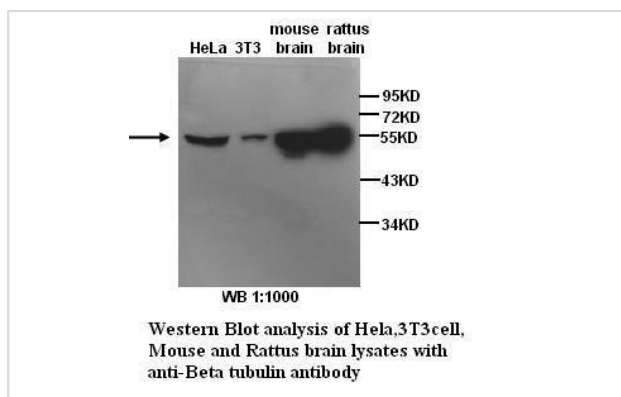
Description

Product Name	β -Tubulin Antibody
Host Species	Rabbit
Clonality	Polyclonal
Purification	Affinity purified
Applications	ELISA WB
Species Reactivity	Hu Ms Rt
Specificity	Not yet tested in other species.
Immunogen Type	Peptide-KLH
Immunogen Description	nthetic peptide conjugated to KLH
Target Name	beta-Tubulin
Concentration	1.0mg/ml
Formulation	PBS, pH 7.4 with 0.02% Sodium Azide
Storage	This product is stable for several weeks at 4°C as an undiluted liquid. Dilute only prior to immediate use. For extended storage, aliquot contents and freeze at -20°C or below. Avoid cycles of freezing and thawing. Expiration date is one (1) year from date of receipt.

Application Details

ELISA WB

Images



Published Papers

el at., Oligodendrocyte progenitor cell-specific delivery of lipid nanoparticles loaded with Olig2 synthetically modified messenger RNA for ischemic stroke therapy *InActa Biomater* On 2024 Jan 15 by Jian Xu?1, Rui Wang et al.. PMID: 38096960, (2023)

PMID: 38096960

Note: This product is for in vitro research use only and is not intended for use in humans or animals.