

# ZNF280A Antibody

Catalog No: #39634



Orders: [order@signalwayantibody.com](mailto:order@signalwayantibody.com)

Support: [tech@signalwayantibody.com](mailto:tech@signalwayantibody.com)

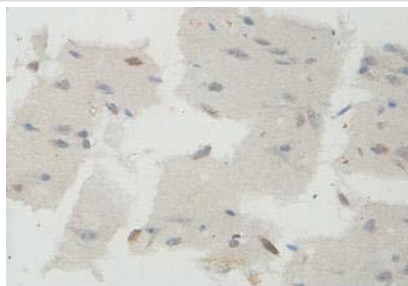
## Description

Product Name	ZNF280A Antibody
Host Species	Rabbit
Purification	Affinity purified
Applications	ELISA WB IHC
Species Reactivity	Hu
Immunogen Type	Recombinant Protein
Immunogen Description	Raised against a recombinant human ZNF280A protein 270-530aa (BC053901).
Target Name	ZNF280A
Concentration	1.0mg/ml
Formulation	PBS, pH 7.4 with 0.02% Sodium Azide
Storage	This product is stable for several weeks at 4°C as an undiluted liquid. Dilute only prior to immediate use. For extended storage, aliquot contents and freeze at -20°C or below. Avoid cycles of freezing and thawing. Expiration date is one (1) year from date of receipt.

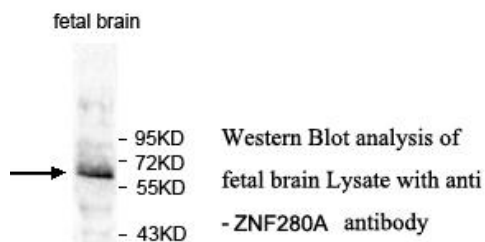
## Application Details

ELISA WB IHC

## Images



Immunohistochemical staining of formalin-fixed paraffin-embedded fetal brain showing nucleus staining with anti-ZNF280A antibody at a dilution of 1/100.



---

Note: This product is for in vitro research use only and is not intended for use in humans or animals.