

ZNF483 Antibody

Catalog No: #39693



Orders: order@signalwayantibody.com

Support: tech@signalwayantibody.com

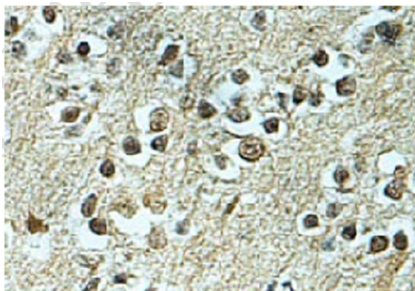
Description

Product Name	ZNF483 Antibody
Host Species	Rabbit
Clonality	Polyclonal
Purification	Affinity purified
Applications	ELISA WB IHC
Species Reactivity	Hu Rt Ms
Immunogen Type	Recombinant Protein
Immunogen Description	raised against a recombinant human ZNF483 protein 1-244aa (BC065738).
Target Name	ZNF483
Concentration	1.0mg/ml
Formulation	PBS, pH 7.4 with 0.02% Sodium Azide
Storage	This product is stable for several weeks at 4°C as an undiluted liquid. Dilute only prior to immediate use. For extended storage, aliquot contents and freeze at -20°C or below. Avoid cycles of freezing and thawing. Expiration date is one (1) year from date of receipt.

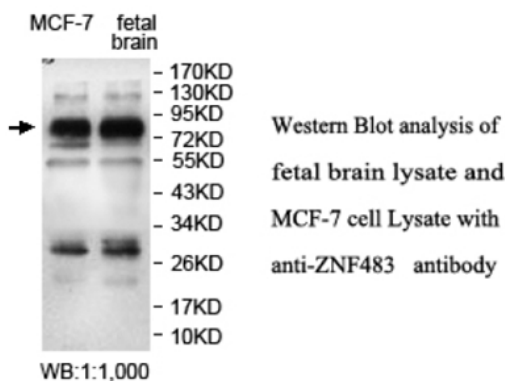
Application Details

ELISA WB IHC

Images



Immunohistochemical staining of formalin-fixed paraffin-embedded fetal brain showing nuclear staining with anti-ZNF483 antibody at a dilution of 1/100.



Note: This product is for in vitro research use only and is not intended for use in humans or animals.