

## ZNF461 Antibody

Catalog No: #39729

Orders: [order@signalwayantibody.com](mailto:order@signalwayantibody.com)Support: [tech@signalwayantibody.com](mailto:tech@signalwayantibody.com)

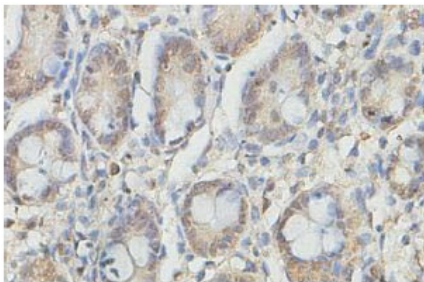
## Description

Product Name	ZNF461 Antibody
Host Species	Rabbit
Clonality	Polyclonal
Purification	Affinity purified
Applications	ELISA IHC
Specificity	Human and predicted against mouse and rat.
Immunogen Type	Recombinant Protein
Immunogen Description	Rabbit polyclonal ZNF461 (1) antibody was raised against a recombinant human ZNF461 protein 126-425aa (BC028631).
Target Name	ZNF461
Concentration	1.0mg/ml
Formulation	PBS, pH 7.4 with 0.02% Sodium Azide
Storage	This product is stable for several weeks at 4°C as an undiluted liquid. Dilute only prior to immediate use. For extended storage, aliquot contents and freeze at -20°C or below. Avoid cycles of freezing and thawing. Expiration date is one (1) year from date of receipt.

## Application Details

ELISA: 1:20000-1:80000 IHC: 1:100-1:500

## Images



Immunohistochemical staining of formalin-fixed paraffin-embedded fetal small intestine showing nucleus staining with anti-ZNF461 antibody at a dilution of 1/100.

Note: This product is for in vitro research use only and is not intended for use in humans or animals.