

ZNF418 Antibody

Catalog No: #39774

Orders: order@signalwayantibody.comSupport: tech@signalwayantibody.com

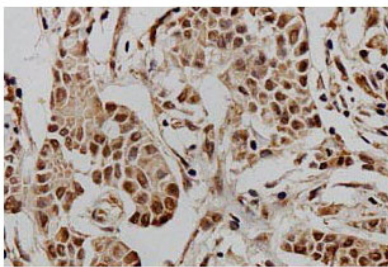
Description

Product Name	ZNF418 Antibody
Host Species	Rabbit
Clonality	Polyclonal
Purification	Affinity purified
Applications	ELISA WB IHC
Specificity	Human and predicted against mouse and rat.
Immunogen Type	Recombinant Protein
Immunogen Description	Rabbit polyclonal ZNF418 (1) antibody was raised against a recombinant human ZNF418 protein 124-416aa (BC113707).
Target Name	ZNF418
Concentration	1.0mg/ml
Formulation	PBS, pH 7.4 with 0.02% Sodium Azide
Storage	This product is stable for several weeks at 4°C as an undiluted liquid. Dilute only prior to immediate use. For extended storage, aliquot contents and freeze at -20°C or below. Avoid cycles of freezing and thawing. Expiration date is one (1) year from date of receipt.

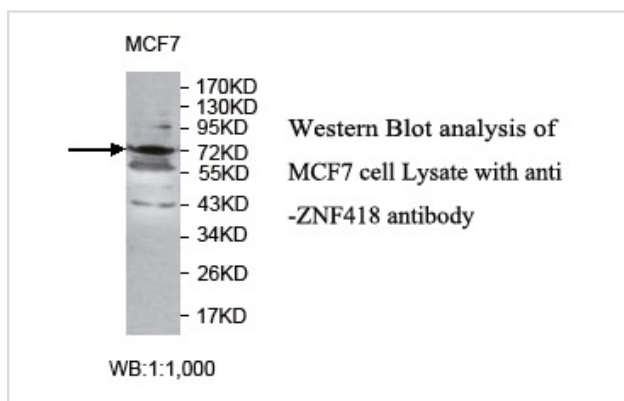
Application Details

ELISA: 1:20000-1:80000 WB: 1:1000-1:2000 IHC: 1:100-1:500

Images



Immunohistochemical staining of formalin-fixed paraffin-embedded breast carcinoma showing nuclear staining with anti-ZNF418 antibody at a dilution of 1/100



Note: This product is for in vitro research use only and is not intended for use in humans or animals.