

Dopamine beta-Hydroxylase antibody

Catalog No: #22483



Orders: order@signalwayantibody.com

Support: tech@signalwayantibody.com

Description

Product Name	Dopamine beta-Hydroxylase antibody
Host Species	Rabbit
Clonality	Polyclonal
Purification	Purified by antigen-affinity chromatography.
Applications	WB IHC IF
Species Reactivity	Hu
Immunogen Type	Recombinant protein
Immunogen Description	Recombinant protein fragment contain a sequence corresponding to a region within amino acids 8 and 280 (P09172) of Dopamine beta hydroxylase
Target Name	Dopamine beta-Hydroxylase
Accession No.	NCBI Gene ID: 1621NCBI mRNA#: NM_000787NCBI Protein#: NP_000778
Concentration	0.7mg/ml
Formulation	Supplied in 0.1M Tris-buffered saline with 10% Glycerol (pH7.0). 0.01% Thimerosal was added as a preservative.
Storage	Store at -20°C for long term preservation (recommended). Store at 4°C for short term use.

Application Details

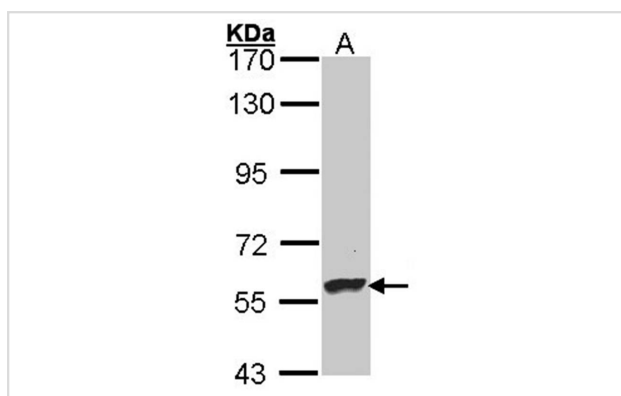
Predicted MW: 69kd

Western blotting: 1:500-1:3000

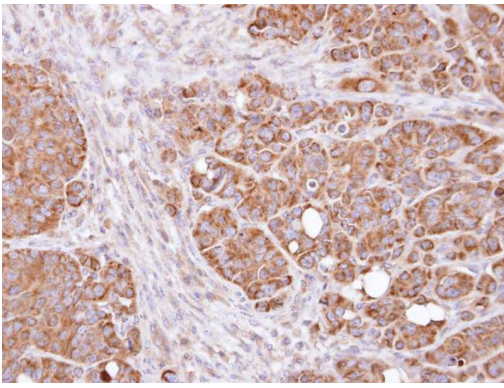
Immunohistochemistry: 1:100-1:250

Immunofluorescence: 1:100-1:200

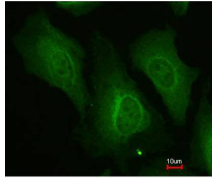
Images



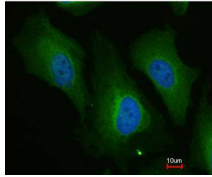
Sample (30 ug of whole cell lysate)
 A: Hep G2
 7.5% SDS PAGE
 Primary antibody diluted at 1: 5000



Immunohistochemical analysis of paraffin-embedded SW480 xenograft, using Dopamine beta-Hydroxylase antibody at 1:500 dilution.



Merged with DNA probe



Immunofluorescence analysis of paraformaldehyde-fixed HeLa, using Dopamine beta-Hydroxylase antibody at 1:200 dilution.

Background

The protein encoded by this gene is an oxidoreductase belonging to the copper type II, ascorbate-dependent monooxygenase family. It is present in the synaptic vesicles of postganglionic sympathetic neurons and converts dopamine to norepinephrine. It exists in both soluble and membrane-bound forms, depending on the absence or presence, respectively, of a signal peptide. [provided by RefSeq]

Note: This product is for in vitro research use only and is not intended for use in humans or animals.