

VWA2 Antibody

Catalog No: #39967

Orders: order@signalwayantibody.comSupport: tech@signalwayantibody.com

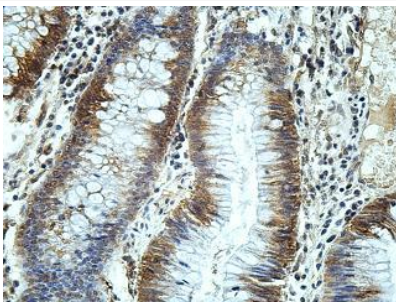
Description

Product Name	VWA2 Antibody
Host Species	Rabbit
Clonality	Polyclonal
Purification	Affinity purified
Applications	ELISA WB IHC
Species Reactivity	Hu Rt Ms
Immunogen Type	Recombinant Protein
Immunogen Description	Rabbit polyclonal VWA2(1) antibody was raised against a recombinant human VWA2 protein 201-373aa (BC128588).
Target Name	VWA2
Concentration	1.0mg/ml
Formulation	PBS, pH 7.4 with 0.02% sodium azide.
Storage	This product is stable for several weeks at 4°C as an undiluted liquid. Dilute only prior to immediate use. For extended storage, aliquot contents and freeze at -20°C or below. Avoid cycles of freezing and thawing. Expiration date is one (1) year from date of receipt.

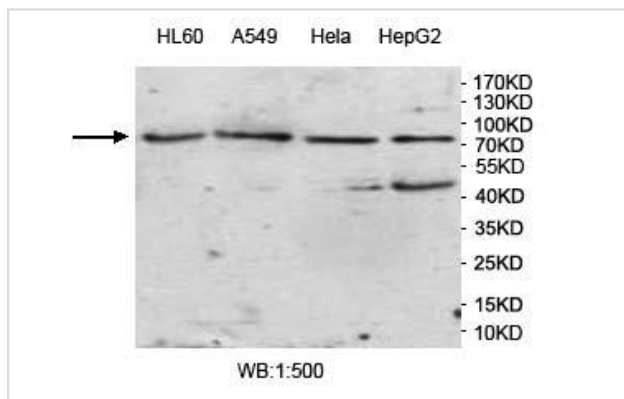
Application Details

ELISA: 1:20000-1:80000 WB: 1:200-1:1000 IHC: 1:100-1:500

Images



Immunohistochemical staining of formalin-fixed paraffin-embedded colon cancer staining with anti-VWA2 antibody at a dilution of 1/100



Note: This product is for in vitro research use only and is not intended for use in humans or animals.