

LYRM5 Antibody

Catalog No: #40017

Orders: order@signalwayantibody.comSupport: tech@signalwayantibody.com

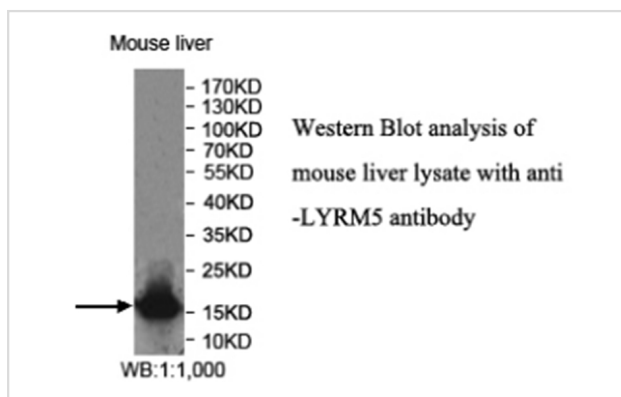
Description

Product Name	LYRM5 Antibody
Host Species	Rabbit
Clonality	Polyclonal
Purification	Affinity purified
Applications	ELISA WB IHC
Species Reactivity	Hu Rt Ms
Immunogen Type	Recombinant Protein
Immunogen Description	Rabbit polyclonal LYRM5(1)antibody was raised against a recombinant human LYRM5 protein 17-84aa(BC071769).
Target Name	LYRM5
Concentration	1.0mg/ml
Formulation	PBS, pH 7.4 with 0.02% sodium azide.
Storage	This product is stable for several weeks at 4°C as an undiluted liquid. Dilute only prior to immediate use. For extended storage, aliquot contents and freeze at -20°C or below. Avoid cycles of freezing and thawing. Expiration date is one (1) year from date of receipt.

Application Details

ELISA: 1:20000-1:80000 WB: 1:200-1:1000 IHC: 1:100-1:500

Images



Note: This product is for in vitro research use only and is not intended for use in humans or animals.