

# TMPRSS11E Antibody

Catalog No: #40160



Package Size: #40160-1 50ul #40160-2 100ul

Orders: [order@signalwayantibody.com](mailto:order@signalwayantibody.com)Support: [tech@signalwayantibody.com](mailto:tech@signalwayantibody.com)

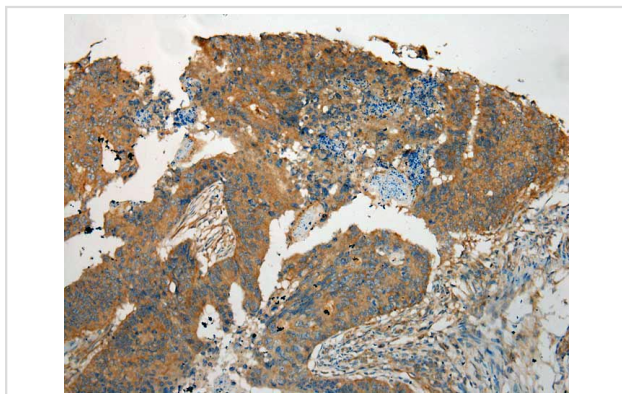
## Description

Product Name	TMPRSS11E Antibody
Host Species	Rabbit
Clonality	Polyclonal
Purification	Antigen affinity purification.
Applications	IHC
Species Reactivity	Hu
Specificity	The antibody detects endogenous levels of total TMPRSS11E protein.
Immunogen Type	Protein
Immunogen Description	Fusion protein corresponding to a region derived from internal residues of human transmembrane protease, serine 11E
Target Name	TMPRSS11E
Other Names	DESC1; TMPRSS11E2
Accession No.	Swiss-Prot:Q9UL52Gene Accssion:BC113412
Concentration	1.8mg/ml
Formulation	Rabbit IgG in pH7.4 PBS, 0.05% NaN <sub>3</sub> , 40% Glycerol.
Storage	Store at -20°C

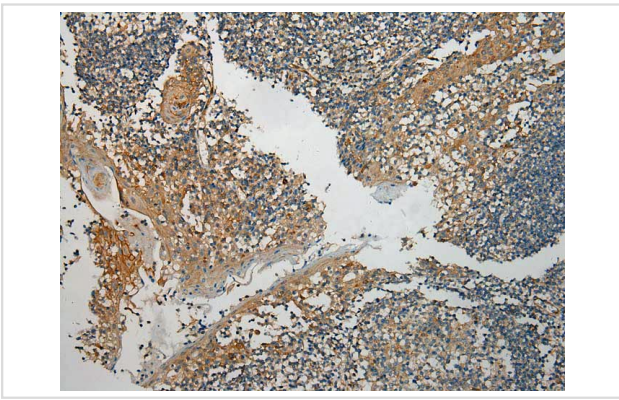
## Application Details

Immunohistochemistry: 1:100-1:200

## Images



Immunohistochemical analysis of paraffin-embedded Human Colorectal cancer tissue using #40160 at dilution 1/100.



Immunohistochemical analysis of paraffin-embedded Human Tonsil cancer tissue using #40160 at dilution 1/100.

## Background

Serine protease which possesses both gelatinolytic and caseinolytic activities. Shows a preference for Arg in the P1 position (By similarity).

## Published Papers

el at., LncRNA-TUSC7/miR-224 affected chemotherapy resistance of esophageal squamous cell carcinoma by competitively regulating DESC1. In J Exp Clin Cancer Res. On 2018 Mar 12 by Chang ZW, Jia YX et al.. PMID:29530057, , (2018)

PMID:  
29530057

Note: This product is for in vitro research use only and is not intended for use in humans or animals.