

LTB4R2 Antibody

Catalog No: #40200

Package Size: #40200-1 50ul #40200-2 100ul

Orders: order@signalwayantibody.com

Support: tech@signalwayantibody.com

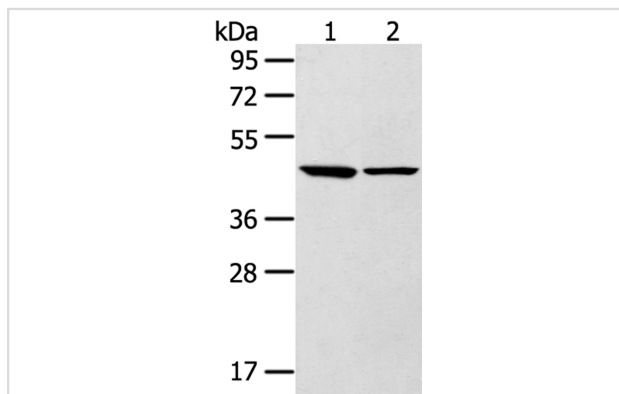
Description

Product Name	LTB4R2 Antibody
Host Species	Rabbit
Clonality	Polyclonal
Purification	Antigen affinity purification.
Applications	WB
Species Reactivity	Hu Ms
Specificity	The antibody detects endogenous levels of total LTB4R2 protein.
Immunogen Type	Peptide
Immunogen Description	Synthetic peptide corresponding to residues near the C terminal of human leukotriene B4 receptor 2
Target Name	LTB4R2
Other Names	BLT2; NOP9; BLTR2; JULF2; KPG_004; LTB4-R2; LTB4-R 2
Accession No.	Swiss-Prot:Q9NPC1Gene Accssion:NP_001158164
SDS-PAGE MW	42KD
Concentration	1.6mg/ml
Formulation	Rabbit IgG in pH7.4 PBS, 0.05% NaN ₃ , 40% Glycerol.
Storage	Store at -20°C

Application Details

Western blotting: 1:500-1:2000

Images



Gel: 8%SDS-PAGE
 Lysates (from left to right): Mouse brain and liver tissue
 Amount of lysate: 40ug per lane
 Primary antibody: 1/250 dilution
 Secondary antibody dilution: 1/8000
 Exposure time: 10 seconds

Background

Leukotriene B4 receptor 1 (LTB4R1), also designated P2Y purinoceptor 7, is a receptor for extracellular ATP, UTP and ADP. Through modulation of L-type calcium currents, LTB4-R1 is involved in the regulation of cardiac muscle contraction. It is also a receptor for leukotriene B4 (LTB4), a potent chemoattractant involved in inflammation and immune response. Leukotriene B4 receptor 2 (LTB4R2) is a ubiquitously expressed 358-amino acid

receptor for LTB4.

Note: This product is for in vitro research use only and is not intended for use in humans or animals.