

SLC6A19 Antibody

Catalog No: #40215

Package Size: #40215-1 50ul #40215-2 100ul

Orders: order@signalwayantibody.comSupport: tech@signalwayantibody.com

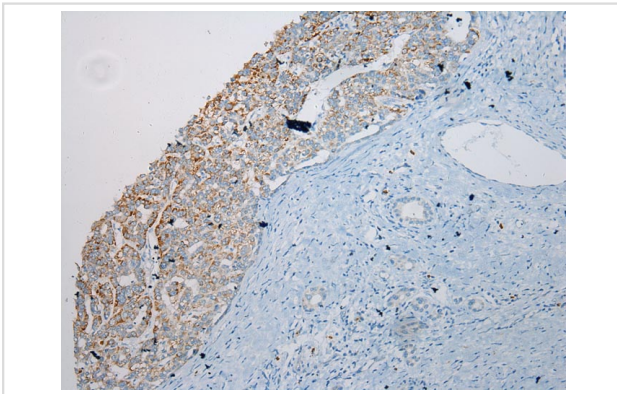
Description

Product Name	SLC6A19 Antibody
Host Species	Rabbit
Clonality	Polyclonal
Purification	Antigen affinity purification.
Applications	IHC
Species Reactivity	Hu
Specificity	The antibody detects endogenous levels of total SLC6A19 protein.
Immunogen Type	Peptide
Immunogen Description	Synthetic peptide of human solute carrier family 6 (neutral amino acid transporter), member 19
Target Name	SLC6A19
Other Names	HND; B0AT1
Accession No.	Swiss-Prot:Q695T7Gene Accssion:NP_001003841
Concentration	1.5mg/ml
Formulation	Rabbit IgG in pH7.4 PBS, 0.05% NaN ₃ , 40% Glycerol.
Storage	Store at -20°C

Application Details

Immunohistochemistry 25-100

Images



Immunohistochemical analysis of paraffin-embedded Human Liver cancer tissue using #40215 at dilution 1/100.

Background

This gene encodes a system B(0) transmembrane protein that actively transports most neutral amino acids across the apical membrane of epithelial cells. Mutations in this gene result in Hartnup disorder.

Note: This product is for in vitro research use only and is not intended for use in humans or animals.