

VMP1 Antibody

Catalog No: #40253

Package Size: #40253-1 50ul #40253-2 100ul

Orders: order@signalwayantibody.comSupport: tech@signalwayantibody.com

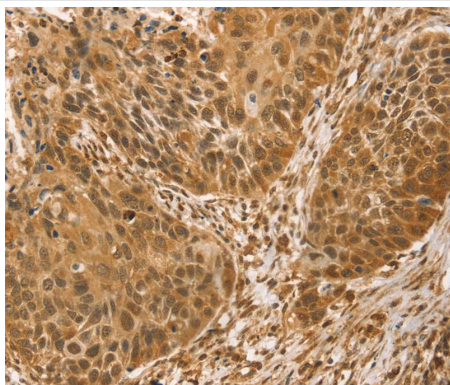
Description

Product Name	VMP1 Antibody
Host Species	Rabbit
Clonality	Polyclonal
Purification	Antigen affinity purification.
Applications	IHC
Species Reactivity	Hu Ms Rt
Specificity	The antibody detects endogenous levels of total VMP1 protein.
Immunogen Type	Peptide
Immunogen Description	Synthetic peptide corresponding to residues near the C terminal of human vacuole membrane protein 1
Target Name	VMP1
Other Names	EPG3; TANGO5; TMEM49
Accession No.	Swiss-Prot:Q96GC9Gene Accssion:NP_112200
Concentration	1.9mg/ml
Formulation	Rabbit IgG in pH7.4 PBS, 0.05% NaN ₃ , 40% Glycerol.
Storage	Store at -20°C

Application Details

Immunohistochemistry:1:25-1:100

Images



Immunohistochemical analysis of paraffin-embedded Human esophagus cancer tissue using #40253 at dilution 1/30.

Background

VMP1 is a stress-induced protein that, when overexpressed, promotes formation of intracellular vacuoles followed by cell death. May be involved in the cytoplasmic vacuolization of acinar cells during the early stage of acute pancreatitis. VMP1 is a transmembrane protein that co-localizes with LC3, a marker of the autophagosomes. It interacts with beclin-1, a mammalian autophagy initiator, through the VMP1-Atg domain, which is essential for autophagosome formation.?

Note: This product is for in vitro research use only and is not intended for use in humans or animals.